

Green and Smart City's Integrator
Smart Factory and Smart Manufacturing's Integrator

Intelligence Makes the Dream Come True

Let's be more SMART, GREEN and HEALTH...



Company Profile

YATRON was established in 2006 in China.

YATRON was reorganized into "YATRON Group" in 2018.

The company is a leading Green and Smart City diversity organization and its business includes Green and smart cities, Smart Factory and Smart Manufacturing, Smart Energy management, Smart agriculture, smart buildings, smart healthcare, smart transportation, smart education, smart sports, etc. From industrial manufacturing, energy, agriculture, commerce, data centers, water treatment, transportation, sports facilities, medical systems, and even education and culture.

YATRON's technology come from General Electric (GE.NYSE) and we are the Authorized Switchgear| Panel Builder | Distributor | System Integrator | Business Partner. We integrate all systems and make the dream come true by intelligence.

We provide customers, across various industries and buildings, automation, with end-to-end product and service solutions that ensure the reliability and protection of the Electrical and Energy infrastructure; from the power plant, substation, train station, airport, port, hotel & resort, commercial building, to a facility's critical equipment, and all the power and energy technologies in between. TÜV SÜD ISO9001, ISO14001, ISO50001 and ERP system are always executing.



Scope of business

■ Smart Systems

- ☐ Green and Smart City
- ☐ Smart factory and Smart manufacturing
- ☐ Smart Energy Management System
- ☐ Made in China 2025 | 2045, Industry 4.0, Industrial Internet
- ☐ Smart Agriculture and Fisheries
- ☐ Smart Education
- ☐ Smart Sports
- ☐ Smart consultancy

■ Manufacturing and System Integration

- ☐ Smart low-voltage switchgears and controlgear equipment and systems
- ☐ Smart Energy Management System
- ☐ Smart compressed air system

■ Energy

- ☐ Energy Consulting Service
- ☐ Energy Management System (EnMS)
- ☐ Renewable Energy
- ☐ Wind and Solar Energy System
- ☐ Electric Vehicle and Charger System
- ☐ Industrial and Building automation integration (BAS, SCADA, PLC)

■ Solutions

- ☐ Data Center
- ☐ Smart UPS and solutions
- ☐ Smart Lighting Solutions
- ☐ Electrical and Mechanical equipment
- ☐ Construction Material

■ Construction and MEP Engineering

- ☐ EPC
- ☐ Turn-key

■ Facility Management

■ Investment and Management

- ☐ Contract energy management
- ☐ PPP, BOT, BT
- ☐ Mega Complex building and Infrastructure
 - ☐ Mega Shopping Mall
 - ☐ Resort, Hotel, Service apartment
 - ☐ Commercial building
 - ☐ High-end residential building
 - ☐ Industrial plant, Intelligence Warehouse
 - ☐ Power plant
 - ☐ Power substation and Water plant
 - ☐ Highway, Railway, Airport and Port
- ☐ Renewable Energy | Wind and Solar Energy
- ☐ Industry, infrastructure, Energy Investment Consulting Service



HISTORY

YEAR/MONTH

CASE

2021/07/01	Establish YATRON Technology Center in Guangzhou
2018/11/02	Establish YATRON Group
2018/09/20	TÜV SÜD/ISO 14001 Environmental Management, YATRON Zhuhai
2018/08/20	Establish YATRON Thailand
2017/10/04	TÜV SÜD/ISO 50001 Energy Management, YATRON Zhuhai
2015/11/02	Establish YATRON International in Taiwan
2015/07/20	Establish YATRON International in Macau
2014/08/20	Establish YATRON Malaysia(Group HQ of ASEAN)
2014/07/20	Establish YATRON Taiwan and Indonesia
2013/07/20	Establish YATRON Hong Kong
2012/09/11	YATRON Group ERP Online
2011/09/29	TÜV SÜD/ISO 9001, YATRON Macau
2010/09/29	TÜV SÜD/ISO 9001, YATRON Zhuhai
2010/05/01	Authorized LV Switchgear Manufacturer by <u>GE Energy</u>
2010/03/01	Establish YATRON Factory in Zhuhai, China
2009/04/08	Authorized Distributor Macau by <u>GE C&I</u> Start the cooperation with Global Biggest Complex Enterprise and Energy Industrial Leader.
2008/09/01	Establish YATRON Zhuhai, China
2006/07/20	Establish YATRON Macau, R&D Center Taiwan





ASIA FOOTPRINT



- **GROUP HQ:** Macau
- **OPERATION CENTER:** Guangdong | Zhuhai
- **R&D CENTER:** Taipei
- **TECH. CENTER:** Guangzhou
- **FINANCE CENTER:** Hong Kong
- **MANUFACTURING CENTER:**
 - Guangdong | Zhuhai, Jiangman
 - Taiwan | New Taipei city
- **BRANCH / REP. / EXP. CENTER**
 - China | Guangdong | Guangzhou, Zhuhai
 - Taipei, Hong Kong, Macau
 - Malaysia | Kuala Lumpur (Headquarter of ASEAN)
 - Thailand | Bangkok
 - Singapore
 - Indonesia | Jakarta
 - Philippines | Manila
 - Vietnam | Ho Chin Minh
 - UK, France | Paris

ORGANIZATION CHART (ASIA)



董事會
Board of Directors

行政總裁
CEO

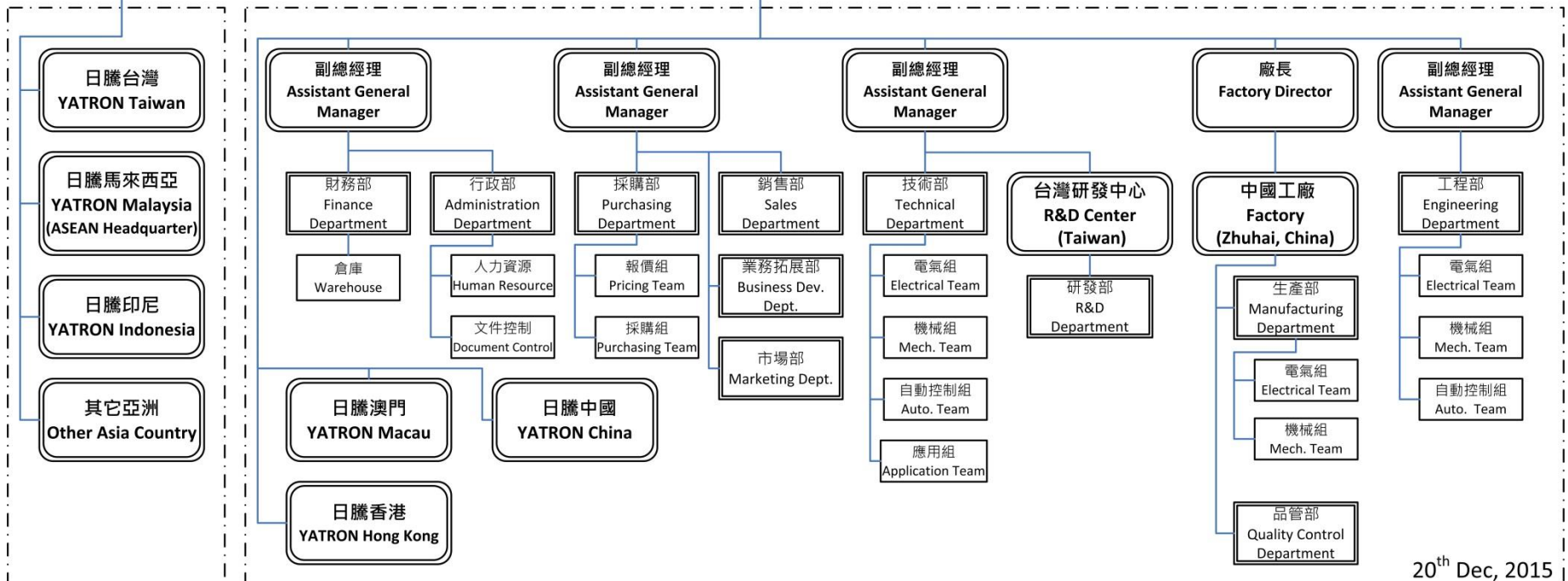


GE TEAM

工廠 FACTORY (Zhuhai, China)

董事總經理 (亞洲, 歐美)
Managing Director
Asia, Europe, America

董事總經理(大中華)
Managing Director
Greater China



20th Dec, 2015

Organization chart

HISTORY COMPANY



**2006/7 - Establish
YATRON Macau,
R&D Center
Taiwan**

**2009/4 Authorized
Distributor Macau by GE**

**2010/05 - Authorized LV Switchgear
Manufacturer by GE Energy**



**2008/9 - Establish YATRON
Zhuhai, China**

**2010/3 - Establish
YATRON Factory in
Zhuhai, China**



**2010/09 - TUV/ISO
9001, YATRON Zhuhai**



**2011/09
TUV/ISO 9001, YATRON Macau**

**2012/09 -
YATRON Group
ERP Online**

**2015/07
Establish YATRON
Intl. in Macau**



**2015/11
Establish YATRON
Intl. in Taiwan**



**2014/07
Establish YATRON
Taiwan and
Indonesia**



**2014/08
Establish
YATRON Energy
Malaysia(Group
HQ of ASEAN)**



HISTORY PRODUCTS

2015/07

YUE MEI Gan Pu Tea
enter to Intl. Market
(Macau, HK, Taiwan,
Singapore, Malaysia and
Indonesia etc.)



YATRON®

**2006/7 - Establish
YATRON Macau,
R&D Center
Taiwan**



**2010/3 - Establish
YATRON Factory in
Zhuhai, China**

**2008/10
First Industrial Enclosure (WM Series)
(Heavy Duty with EN 62208)
and Exhibit in Automation Show in Guangzhou China**



**2010/05
First LV Switchgears
(YATRON and GE)**



**2013/08
First Energy Management System**

KenerSys
EnMS | Sustainability | ISO 50001



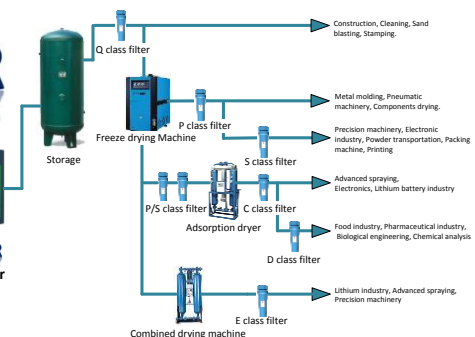
**2014/10
First Intelligence Air
Compressor**

KenerAIR



**2015/01
First MV-VCB**

KenerPower



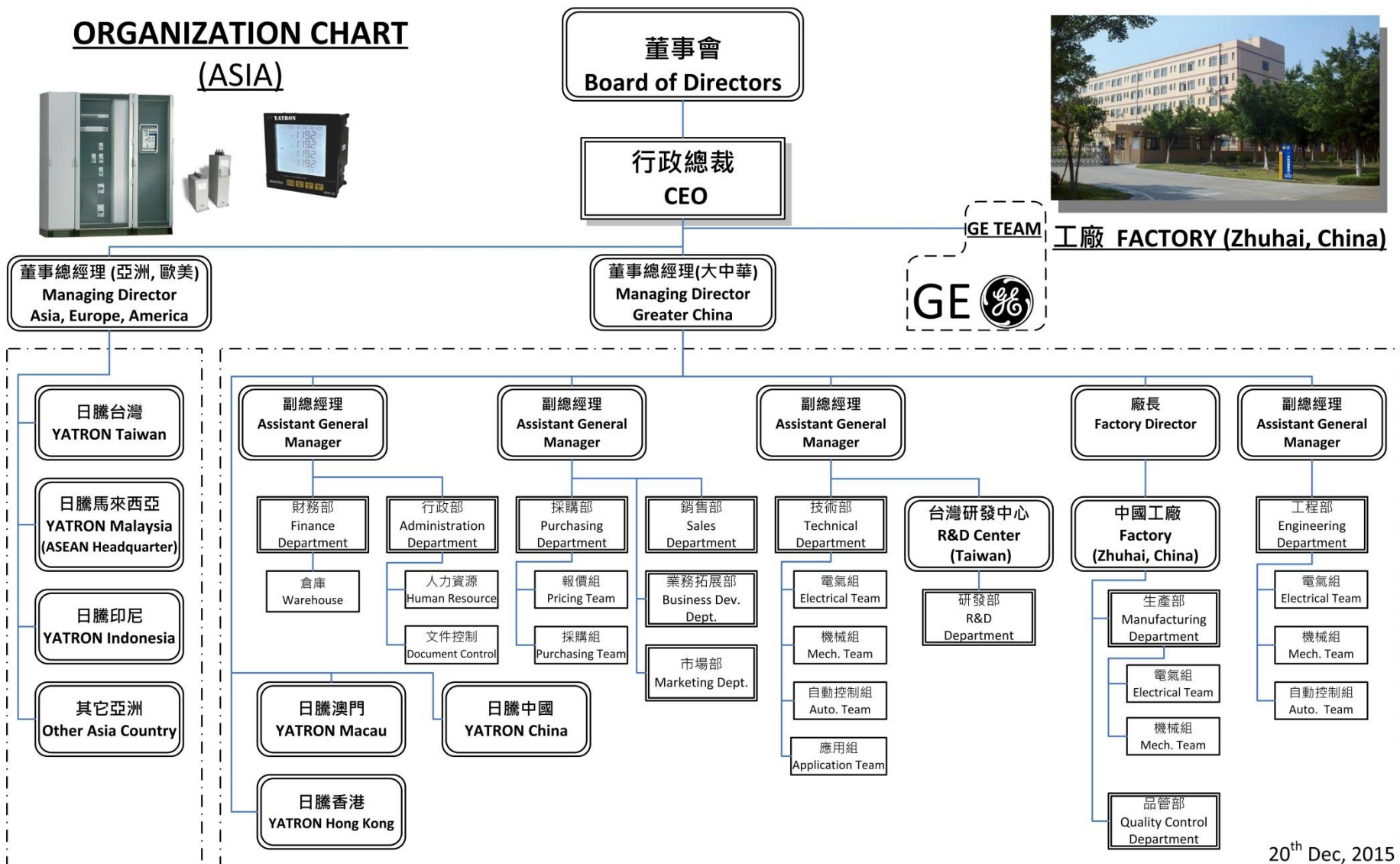


Certificates

Complies with	Certificates
ISO 9001, ISO 14001	TÜV SÜD (Germany)
ISO 50001	TÜV SÜD (Germany)
IEC 62208	TÜV SÜD (Germany)
IEC 60439, IEC 61439	KEMA, ASEFA, CEBEC, ASTA, TUV
GB 7251	CCC (China)
IEC 60331	TICW
BS 6387	TICW
UL94	SGS



ORGANIZATION CHART (ASIA)



20th Dec, 2015

公司架構 Organization chart



TOTAL SOLUTIONS



 **KenerMUS**



 **KenerCITY**



 **KenerPower**



 **KenerPV**



 **KenerSys**



核心業務 Core Business

Manufacture and Solutions



KenerCITY ■ Smart City



KenerSys ■ Smart Factory and Manufacturing

- Smart Energy Management
- Smart Building
- Smart Fish and Agriculture



KenerMUS ■ Smart Museum



核心業務 Core Business

Manufacture and Solutions



KenerPower ■ Smart Switchgear and Controlgear



KenerPV ■ Smart Solar Photovoltaics



KenerAIR ■ Smart and Intelligence Air Compressor system



核心業務 Core Business



GE

MANUFACTURE

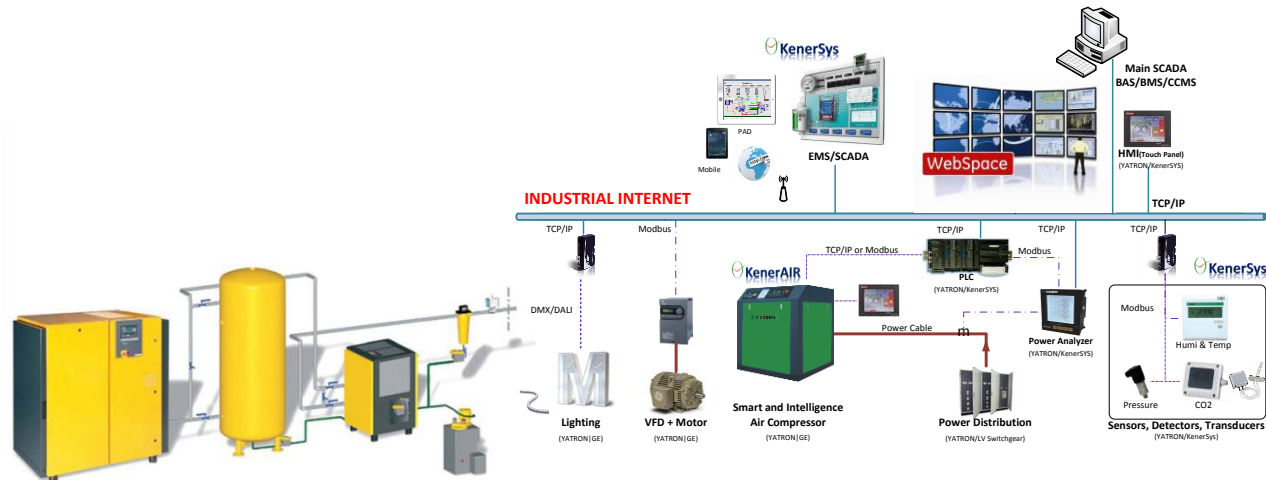


➤ SWITCHGEAR AND CONTROLGEAR ASSEMBLIES

➤ COMPONENTS AND SOFTWARE OF
ENERGY MANAGEMENT SYSTEM



➤ SMART AND INTELLIGENCE AIR COMPRESSOR SYS.





SMART CITY - SUSTAINABLE

Smart City

AUTOMATION | IOT | BIG DATA | MACHINE LEARNING | AI



Smart City need Smart Energy and IoT
Let's be SMART ...





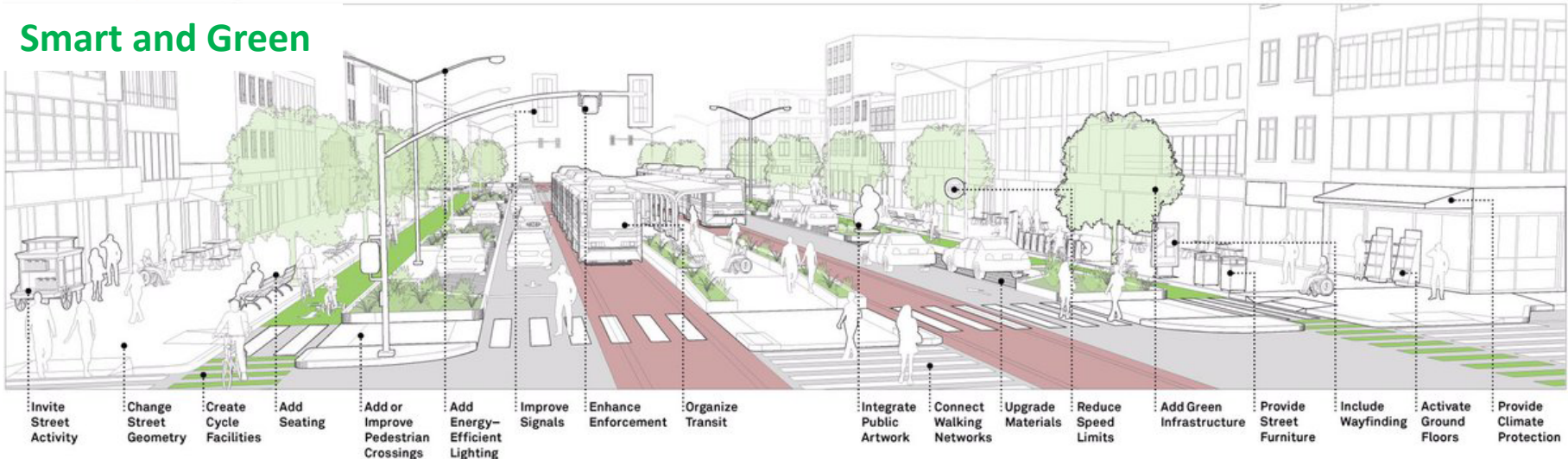
Smart City

AUTOMATION | IOT | BIG DATA | MACHINE LEARNING | AI

Existing



Smart and Green



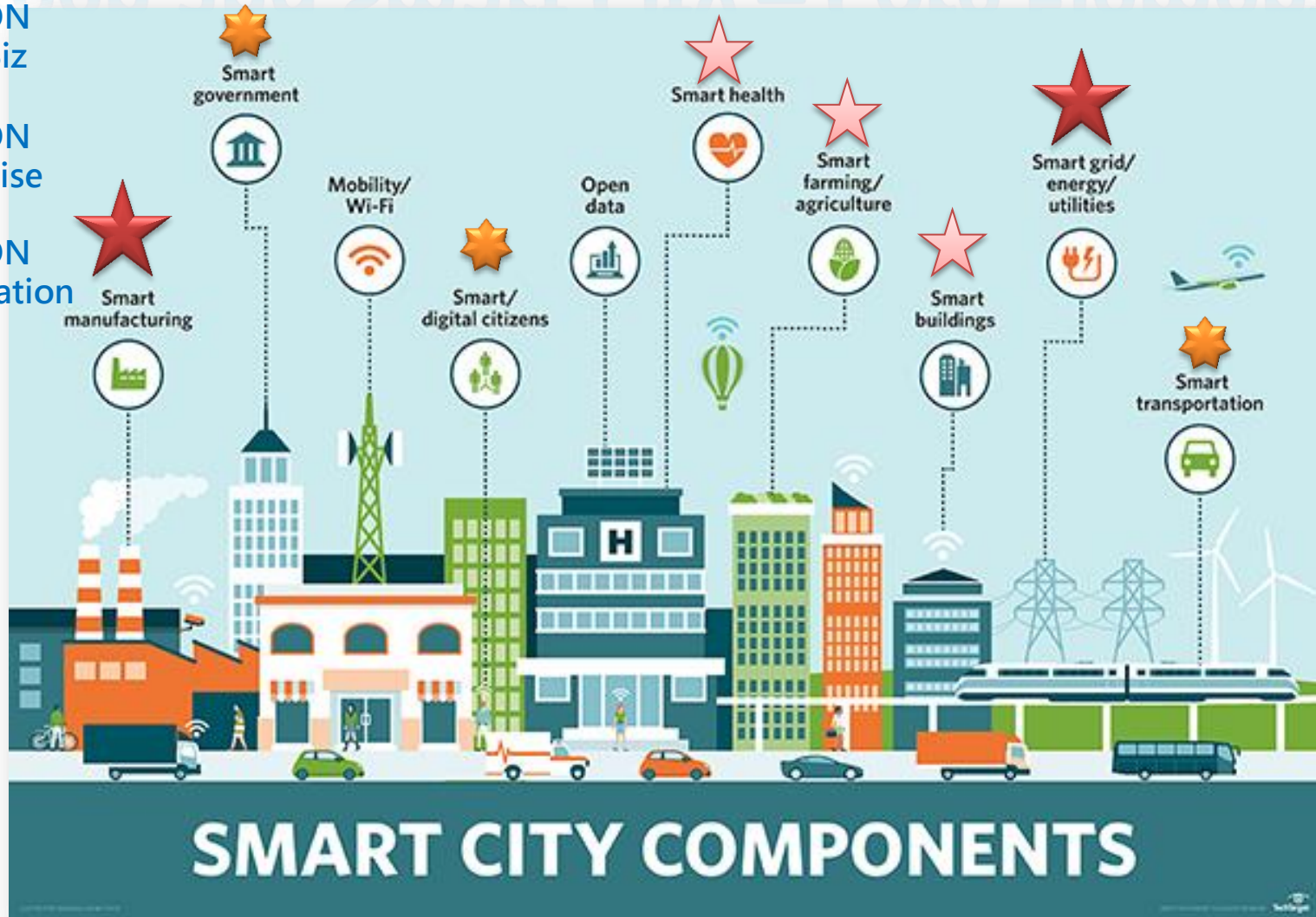


Green and Smart City – Core Elements

★ YATRON
Core Biz

★ YATRON
Expertise

★ YATRON
Integration





Green and Smart City – Core Elements

SMART CITY



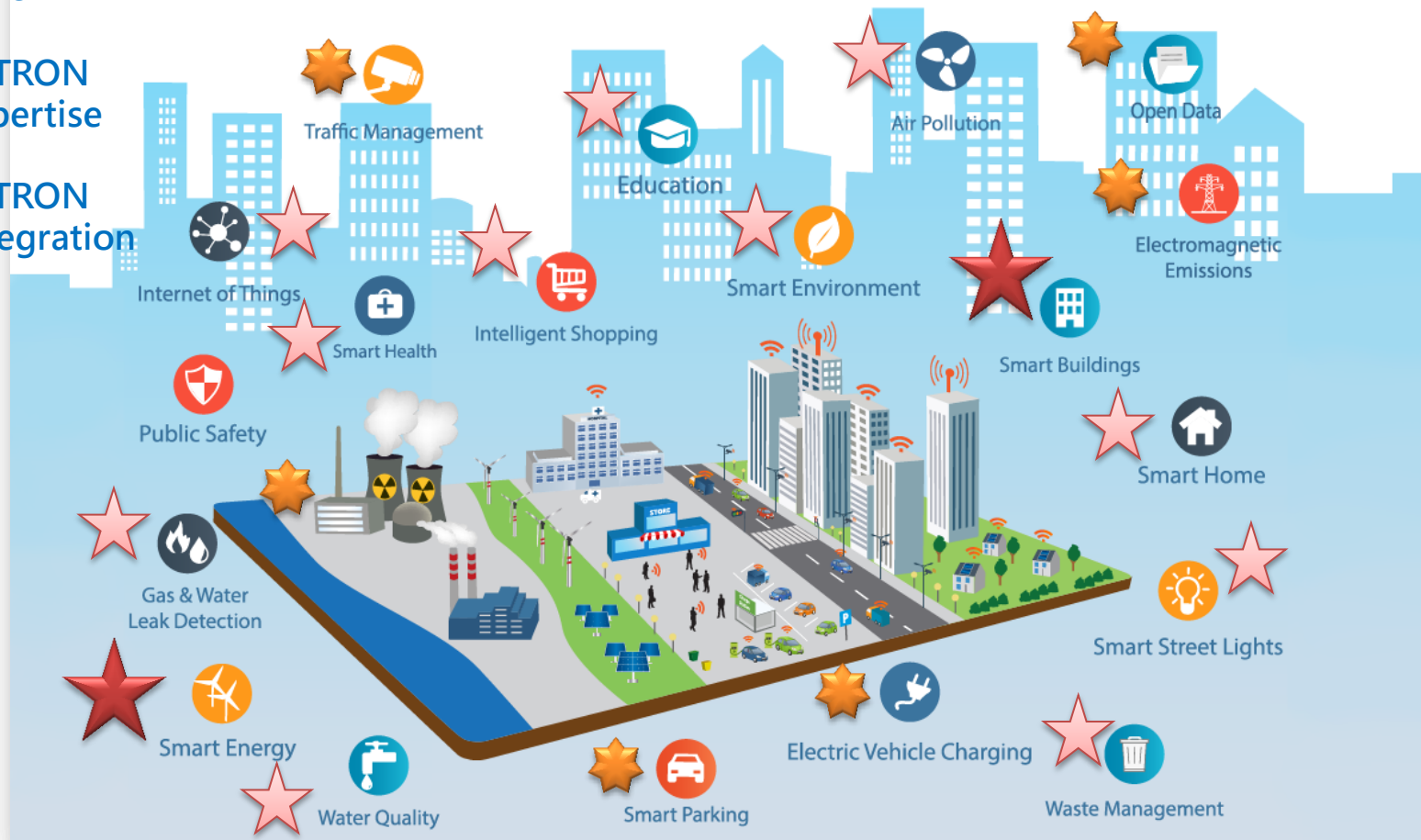
YATRON
Core Biz



YATRON
Expertise

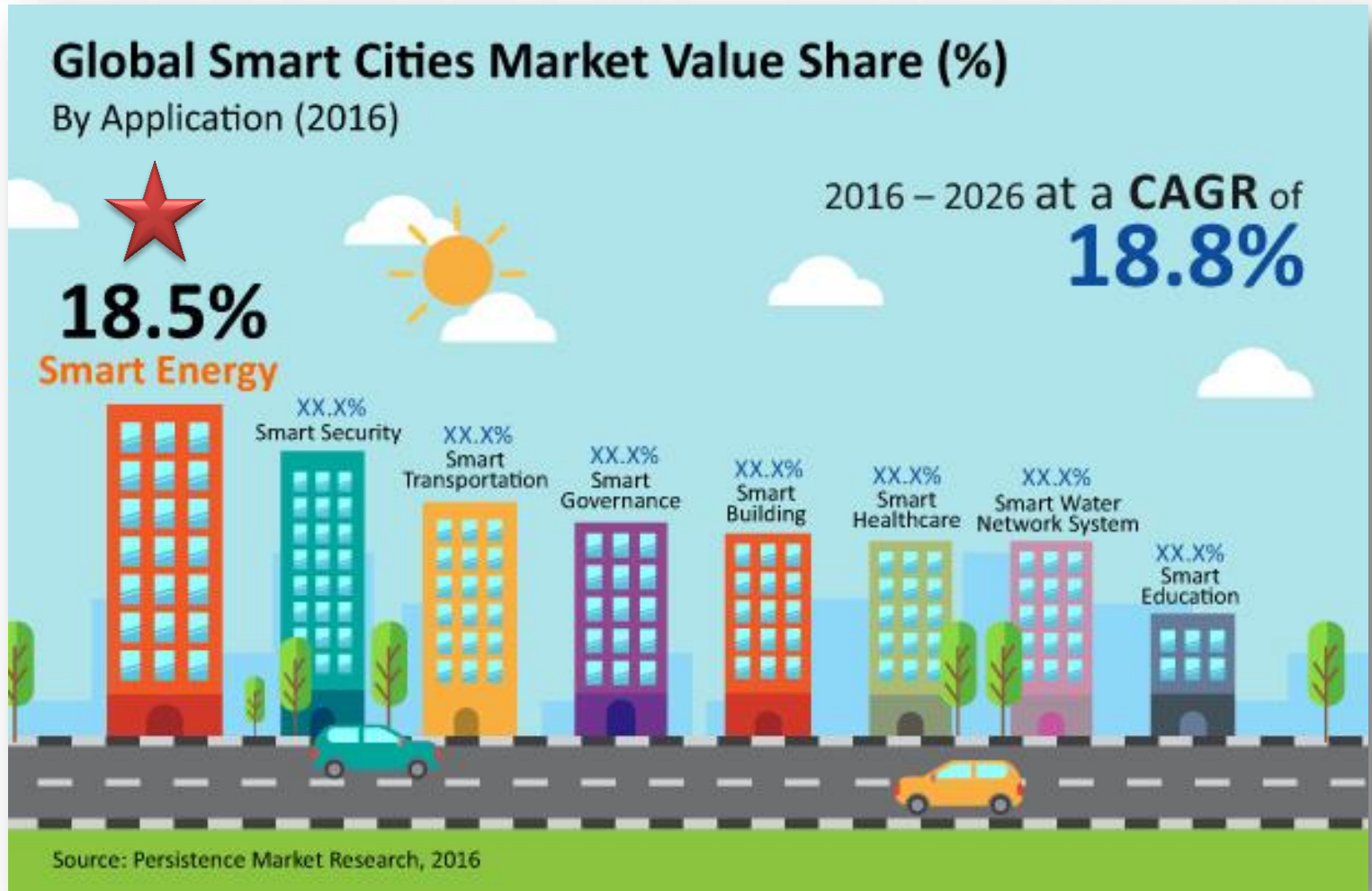


YATRON
Integration





Green and Smart City – Core Elements

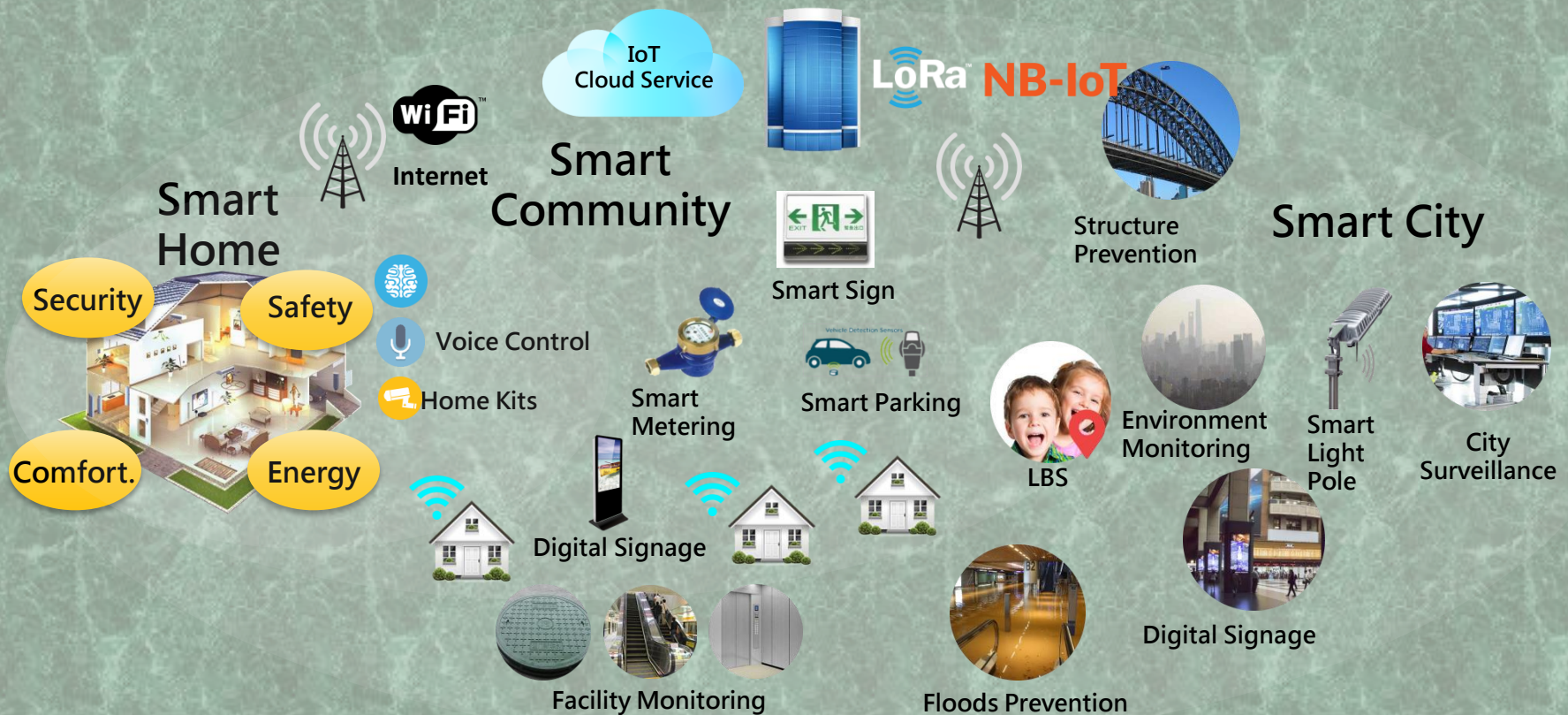


- ★ YATRON Core Biz
- ★ YATRON Expertise
- ★ YATRON Integration



Smart City

IOT | BIG DATA | MACHINE LEARNING | AI

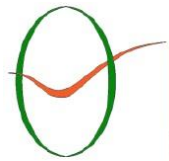




ENERGY MANAGEMENT SYSTEM

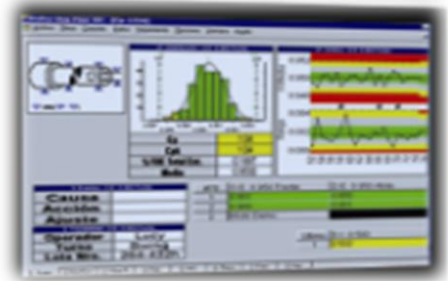
Smart Energy Management System

IOT | BIG DATA | MACHINE LEARNING | AI



KenerSys

EnMS | Sustainability | ISO 50001





BENEFIT OF YATRON ENERGY



BENEFIT of YATRON Energy

- Authorized Business Partner | System Integrator of GE
 - Global Technical Support, Technical Transfer and Experience.
- Authorized Business Partner | System Integrator of ITRI Taiwan
 - Top ONE Technical Support, Technical Transfer and Experience of High Technology and Traditional Industry in Taiwan
 - 6,000 R&D employees.
 - 400 R&D employees in Green Energy and Environment Research Laboratories.
 - Support the BIG DATA Analysis and System improvement for end users.
- YATRON Energy's Technical and Service team **in Greater China and ASEAN**
 - R&D Center in Taiwan → High Quality R&D and production team.
 - EMS products Made in Taiwan → High Quality.
 - Key management of Group in Macau | Taiwan → Best service for Greater China.
 - Headquarter of ASEAN in Kuala Lumpur of Malaysia → Best service for ASEAN.
 - Branch Company and Service Center cover each region → Fast response time.
 - Strong team background and experience about Owner, Consultancy, Contractor, Manufacturer and S.I → Well known all parties' mindset and requirement.



Key Topic

- **ENERGY MANAGEMENT**
 - ENERGY SAVING
 - ENERGY CONTROL AND MONITORING
- **SYSTEM IMPROVEMENT**
- **SUSTAINABILITY**
- **CSR (CORPORATE SOCIAL RESPONSIBILITY)**





THE PROBLEMS WITHOUT BAS/EMS

Without BAS and EMS in the factory or building, the equipment and systems will be some issues...

- Control issue
- Management issue
- Maintenance issue
- Risk issue
- Energy loss issue

→ Cost increasing...





ENERGY CONSULTING SERVICE

WHY YOU NEED ENERGY CONSULTANT?

- Product selling prices getting lower and lower? → Enhance corporate image and enhance the additional value
- Increase cost of the production → Reduce costs of production, improve efficiency
- Facing difficulty in cost control / reduce? “Bottleneck” → Creativity and assist by advance technology
- Competitiveness of price, market and service decreasing? → Utilize advance technology to reduce manpower
- Decline of competitive advantages → Innovation in management practices
- Plan of the corporate sustainable development direction and pace?
→ Advisory from international professional consultant
- Global client request for the Corporate Social Responsibility Report? → ISO 50001 → Improve corporate image
- Compliance with legal requirements in the local markets? → Energy saving → Improve corporate image
- How to improve the corporate culture? → Improve working environment and corporate image





ENERGY CONSULTING SERVICE

WHY YOU NEED ENERGY CONSULTANT?

- Compliance with industry best practices or standards → ISO 50001
- Improve the company's reputation among customers → ISO 50001 → Improve corporate image
- Employee lack of energy? ISO 50001 → Improve the work environment
- Low efficiency in production and yield? ISO 50001 → Improve working environment
- Saving technological transformation projects have been done (Frequency conversion, LED, Heat recovery etc.), How to economize more energy and electricity? → ISO 50001 → It should be done to manage energy and the establishment of efficient energy management software platform
- Employee lack of energy saving concept? → ISO 50001 → Apply high-tech Energy management systems
- Do not have any method to link Energy Saving and KPI together? → ISO 50001 → Apply high-tech Energy management systems and software, it show Monthly, or real-time each sector performance, especially in energy performance.





Key Topic

ENERGY MANAGEMENT, SAVING, CONTROL AND MONITORING

- ❑ **Build up the EnMS** (Energy Management System): Hardware + Software
- ❑ **Air conditioning:** Process and environment requirement, temperature of rooms (Control and Monitoring).
- ❑ **Ventilation Fans:** Air flow in the areas (Control and Monitoring).
- ❑ **Elevator and Escalator:** Operation control, time control.
- ❑ **Air Compressors:** Operation control, Pressure guarantee, Air leakage monitoring (Control and Monitoring).
- ❑ **Lightings:** lux management in the working and public areas (Management)
- ❑ **Roof:** Transparence and ventilation (Renovation).
- ❑ **Recycle of waste heat and cooling:** preheat for process, warm water necessary. Precool and cooling recycle.
- ❑ **Energy Management System:** electricity and cost monitoring and reports



Win the energy challenge with
ISO 50001



ISO 50001
energy management





ISO 50001 — What is it ?

- ISO 50001:2011, *Energy management systems – Requirements with guidance for use*, is a voluntary International Standard developed by ISO (International Organization for Standardization).
- ISO 50001 gives organizations the requirements for energy management systems (EnMS).
- ISO 50001 provides benefits for organizations large and small, in both public and private sectors, in manufacturing and service, in all regions of the world.
- ISO 50001 will establish a framework for industrial plants ; commercial, institutional, and governmental facilities; and entire organizations to manage energy.
- Targeting broad applicability across national economic sectors, it is estimated that the standard could influence up to 60% of the world's energy use.





ISO 50001 — What will it do?

- ISO 50001 will provide public and private sector organizations with management strategies to increase energy efficiency, reduce costs and improve energy performance.
- The standard is intended to accomplish the following :
 - Assist organizations in making better use of their existing energy consuming assets
 - Create transparency and facilitate communication on the management of energy resources
 - Promote energy management best practices and reinforce good energy management behaviors
 - Assist facilities in evaluating and prioritizing the implementation of new energy efficient technologies
 - Provide a framework for promoting energy efficiency throughout the supply chain



ISO 50001 — What will it do ?

- Facilitate energy management improvements for greenhouse gas emission reduction projects
- Allow integration with other organizational management systems such as environmental, and health and safety (ISO 9001, ISO 18000, ISO 14000)



貴組織對能源管理感興趣最主要的三個理由為何？

- 降低/控制成本
- 遵守產業最佳實務或標準
- 改善公司在客戶之間的名聲
- 配合現存的企業文化
- 保護全球氣候
- 從主要客戶獲得相關想法
- 年報中有企業社會責任聲明
- 遵守地方市場的法律要求



SOLUTIONS



ENERGY MANAGEMENT SYSTEM(EnMS)

- Power Monitoring and Control System (PMCS)
- Power Quality Management System (PQMS)
- Energy Metering System
- Transformer Monitoring and Control System (TMCS)
- Carbon Emission Management System
- Wind and Solar Energy System
- EV Charger station for Electric Vehicle



MONITORING AND CONTROL

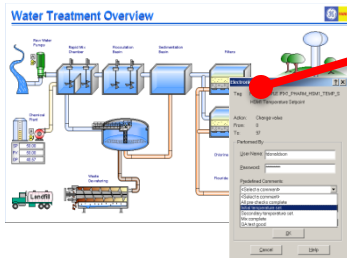




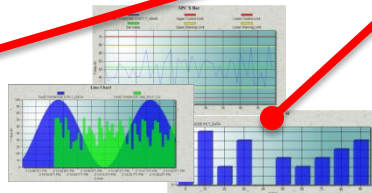
MONITORING AND CONTROL



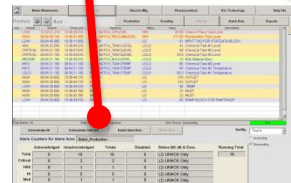
WebSpace



SCADA Control
SCADA控制



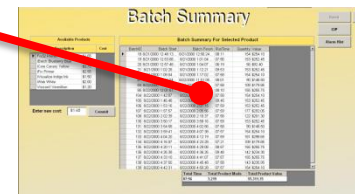
Historical Analysis
歷史分析



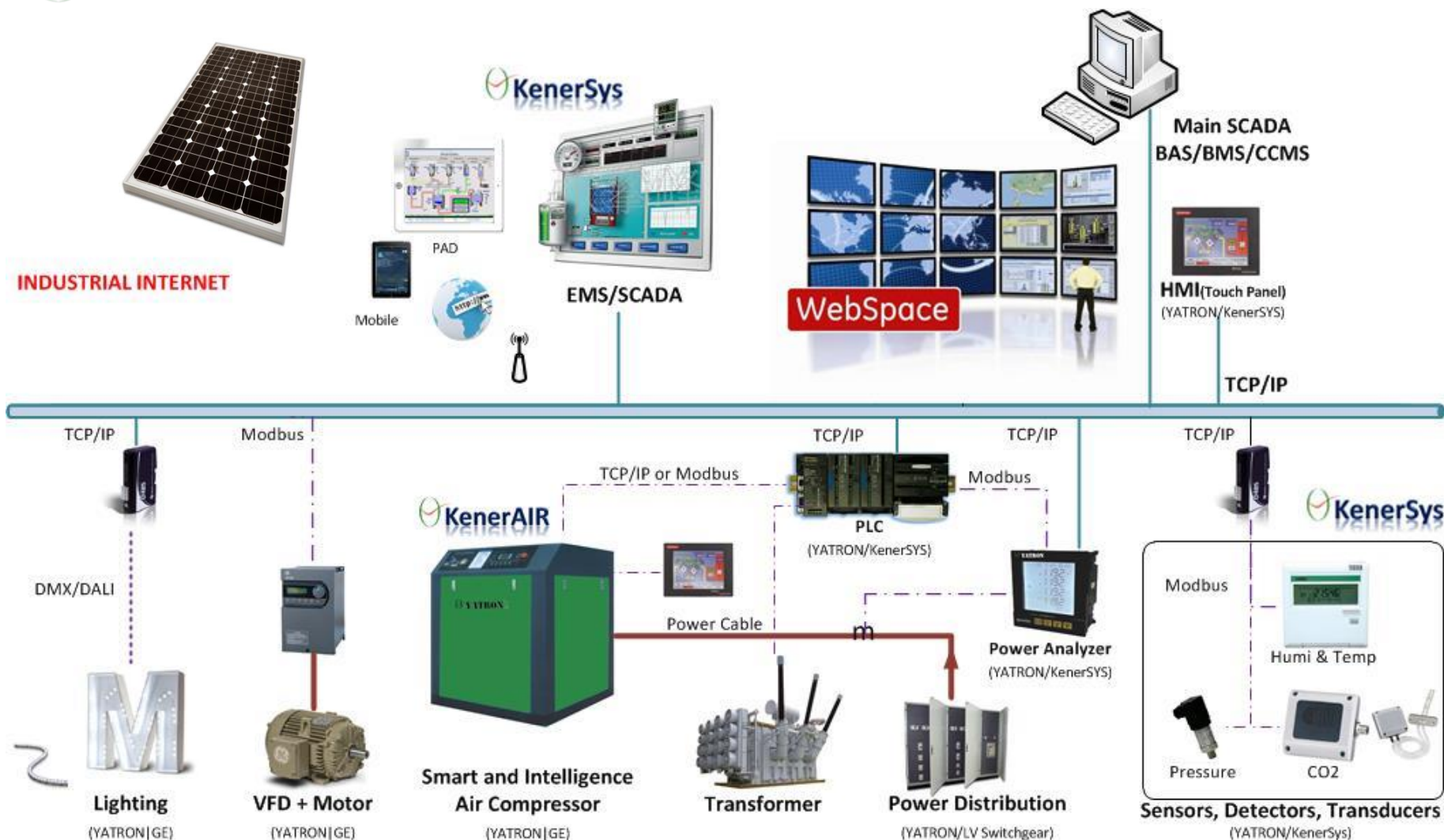
Alarm
報警回應



KPI Monitoring
KPI監視



Operation Report
運行報表



SCHEMATIC系統架構圖



Energy Management Systems

Allowing facility owners to shed some light on the unknowns of their power system, the fully integrated PMCS Energy Management System provides the tools to help control energy costs, minimize downtime and increase productivity.



Featured Products

Energy Management Systems
Complete automation solution customized to your power management needs

[View Product Info](#)



Advanced Power Quality Metering
Revenue grade power quality capabilities and waveform recording

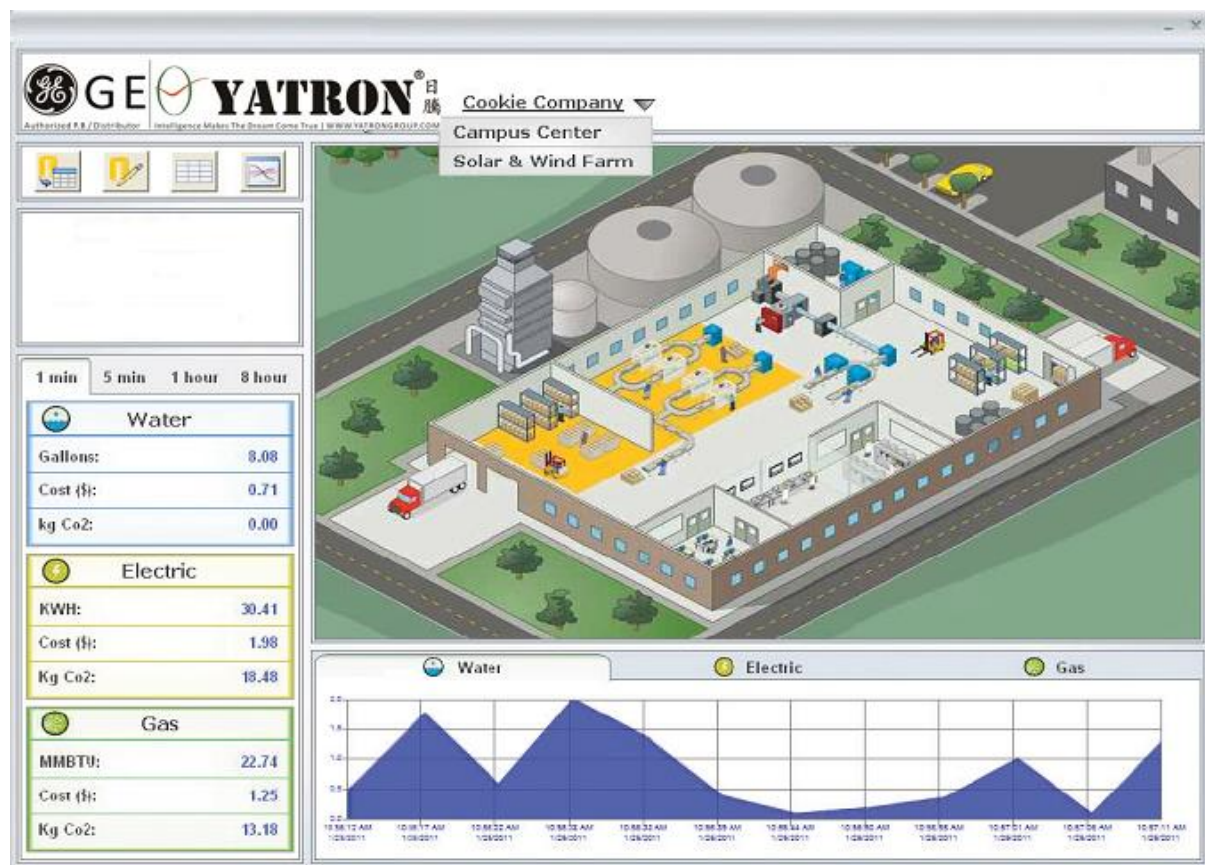
[View Product Info](#)



Managed Ethernet Switches
Industrial hardened networking solutions

[View Product Info](#)



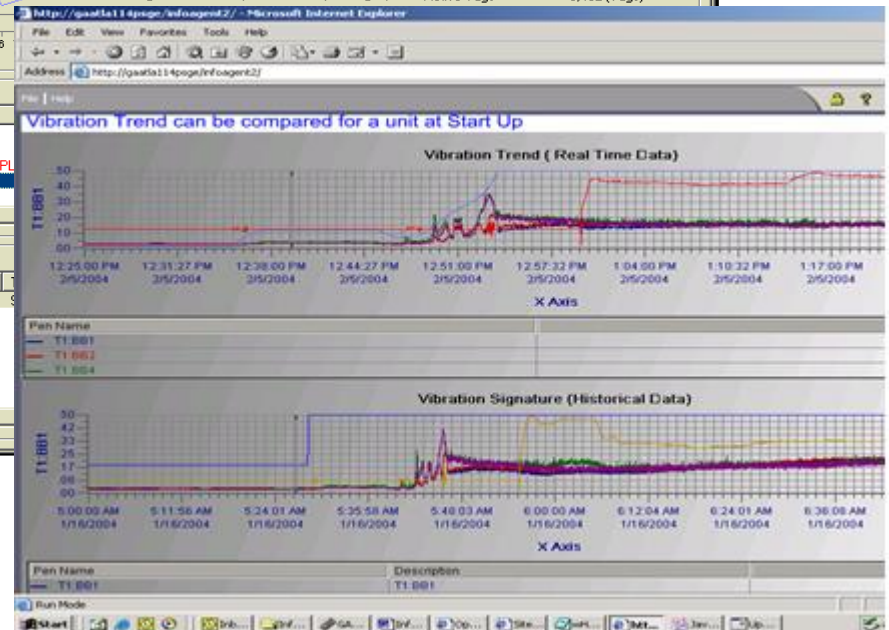
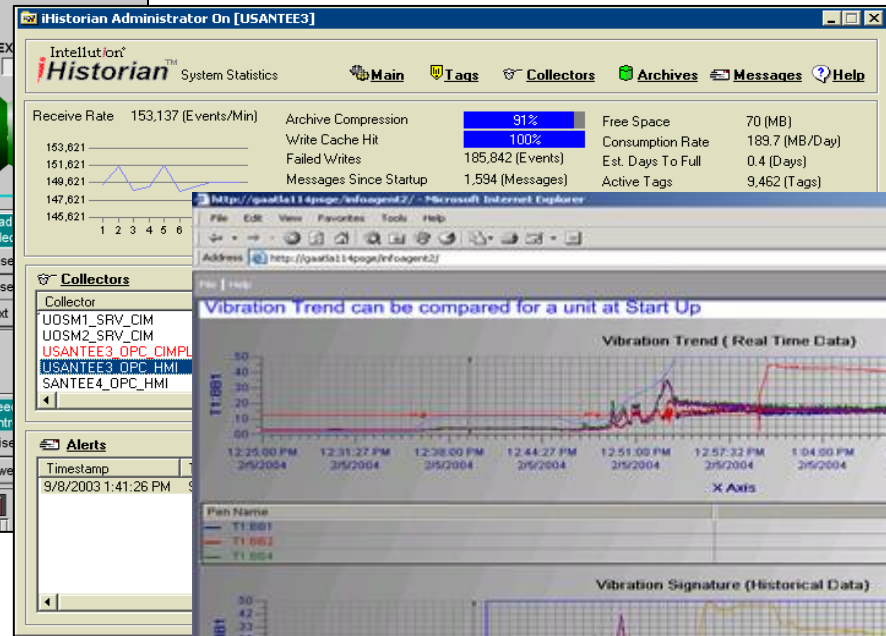
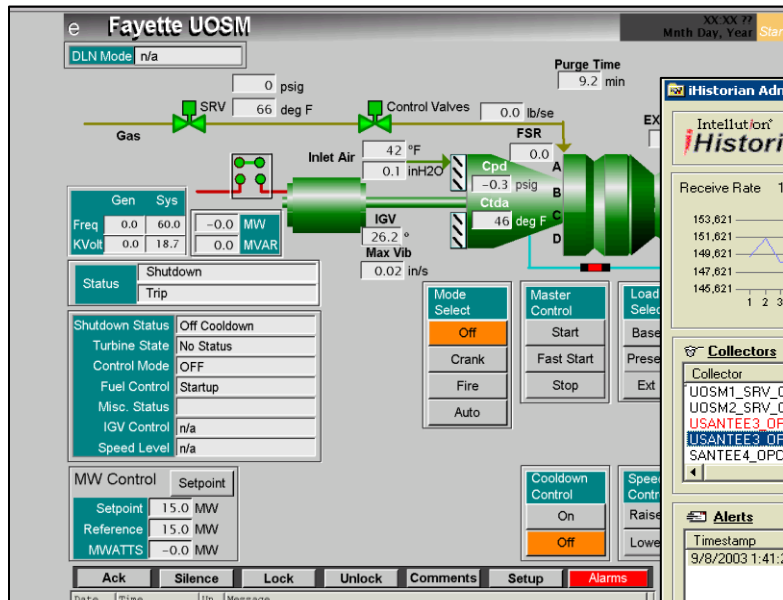


Leverage automatic and manual data collection methods

Contextualize raw data quickly
With a configuration wizard that includes CO2 conversion and/or cost conversion factors, you can immediately turn raw consumption figures into cost and emission figures that illustrate the value of reduction initiatives over time.

Use Proficy out of the box or build application-specific solutions

- Capture any data stream
 - Water, gas, electricity, steam
 - View data by load type (HVAC, lighting) or building floor
- Base on Consumer type and Loading**



- Capture any data stream
 - Water, gas, electricity, steam
 - Base on the data by load type (HVAC, lighting) and building floor.
- Collect and Evaluate the data. And we use those **BIG DATA** analysis and improve the system. **Energy saving up to 40%.**



■ High Efficiency and High Quality EnMS

→ Energy saving up to 40%

→ Money saving up to 40%



■ Earlier you establish EnMS

→ As early you save one more day...

→ To earn more money \$\$\$...





SMART MUSEUM

Smart Museum System

IOT | BIG DATA | MACHINE LEARNING | AI



KenerMUS



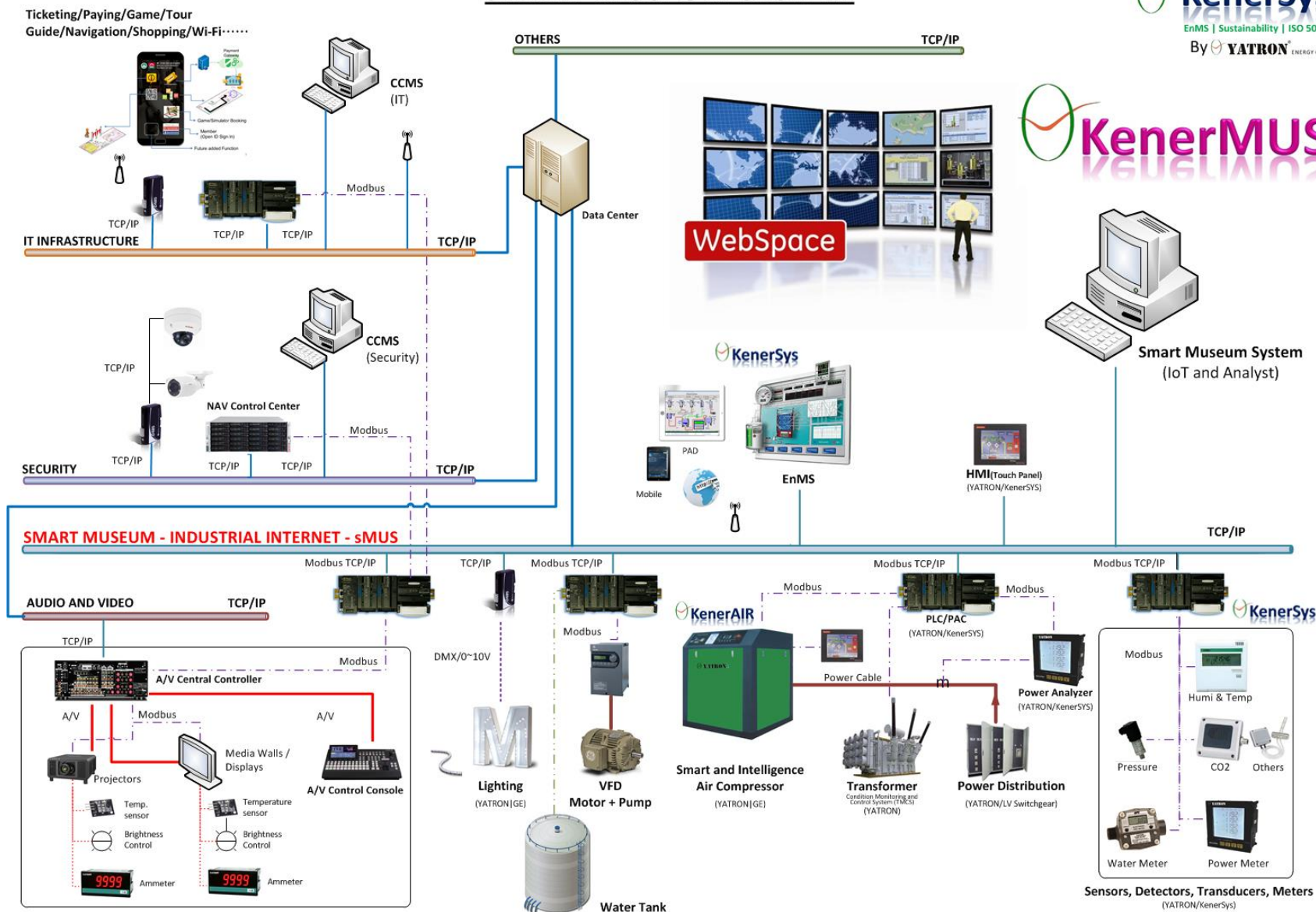
Smart City need SMART MUSEUM
Let's be SMART ...





SMART MUSEUM

SMART MUSEUM SYSTEM





RENEWABLE ENERGY



RENEWABLE ENERGY
WIND AND SOLAR





RENEWABLE ENERGY

WIND AND SOLAR ENERGY SYSTEM

TECHNICAL COOPERATION | SUPPORT FROM



GE



工業技術研究院

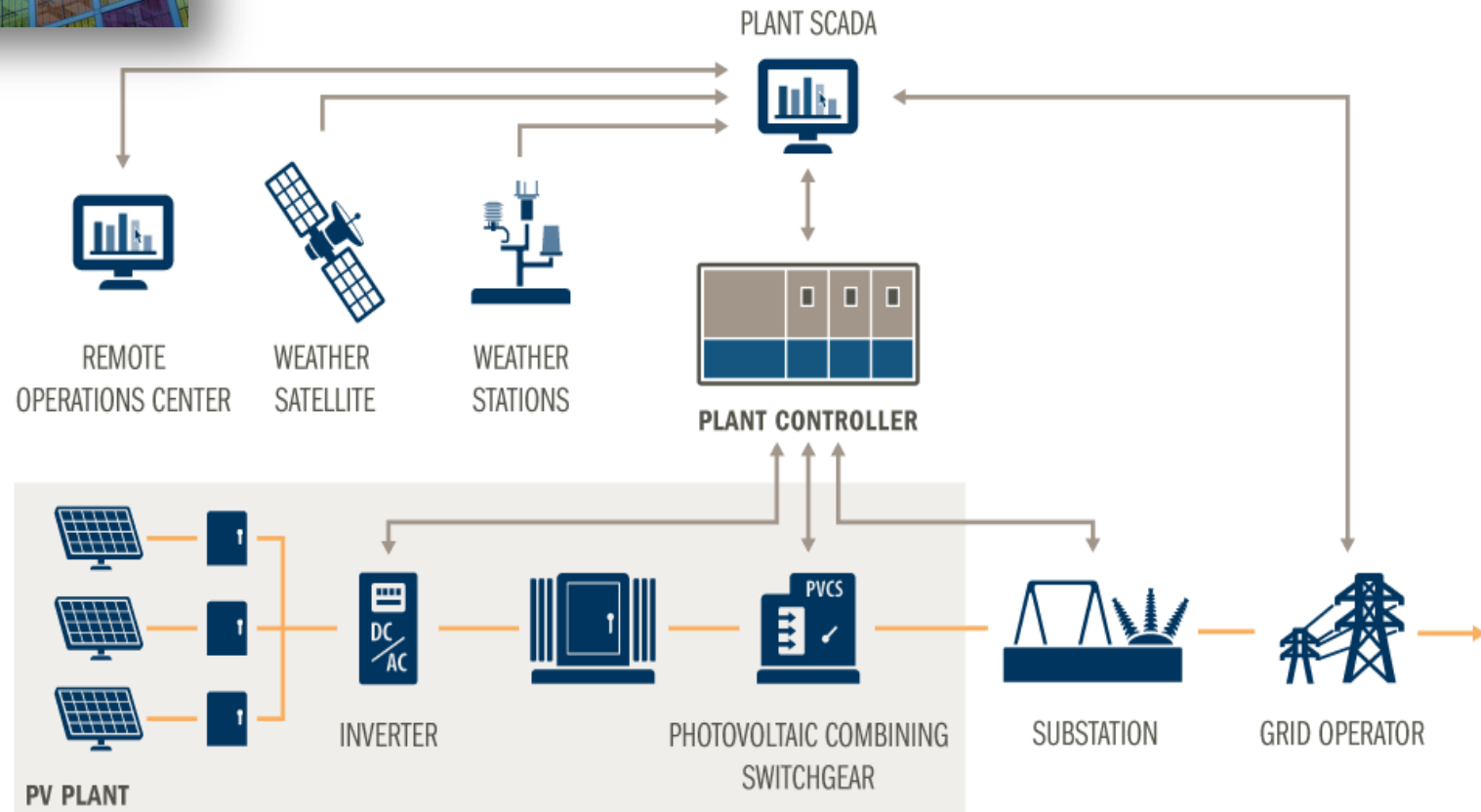
Industrial Technology
Research Institute



BIPV

Building-integrated Photovoltaics

BIPV (large scale) & Grid Scale Solar Power Plant

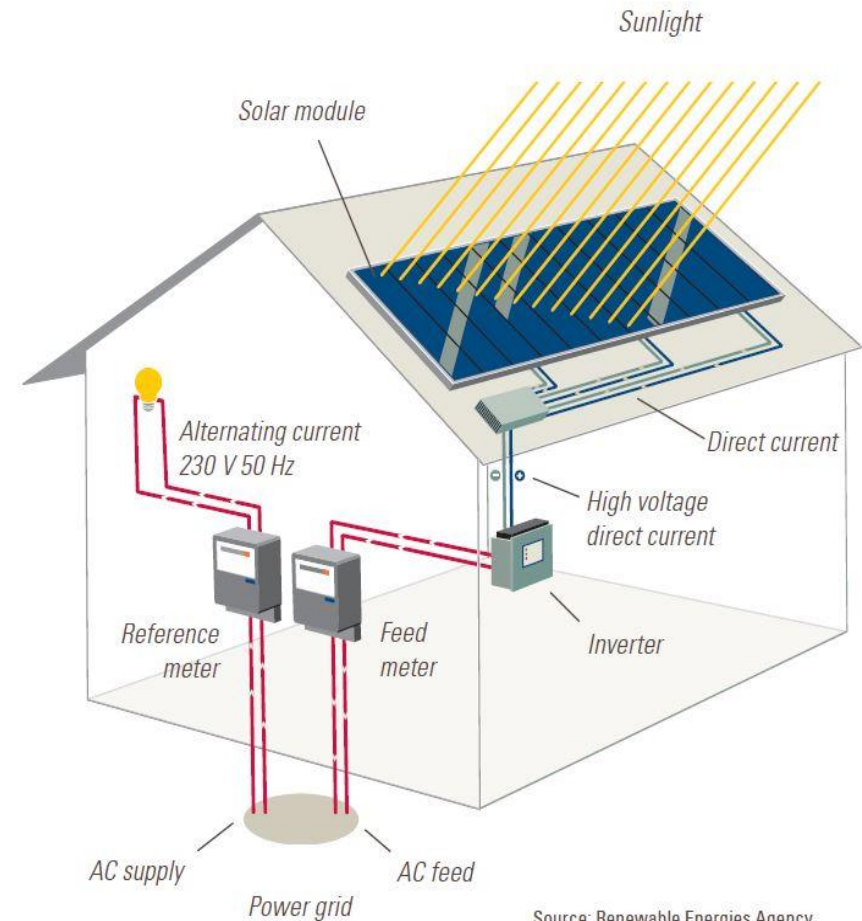
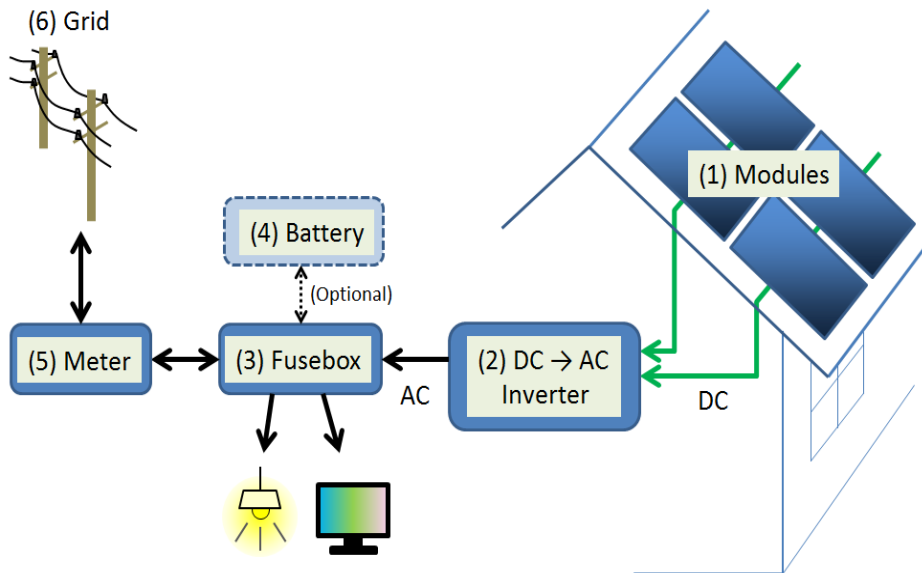




BIPV Building-integrated Photovoltaics



Home PV Solar Power Plant



Source: Renewable Energies Agency



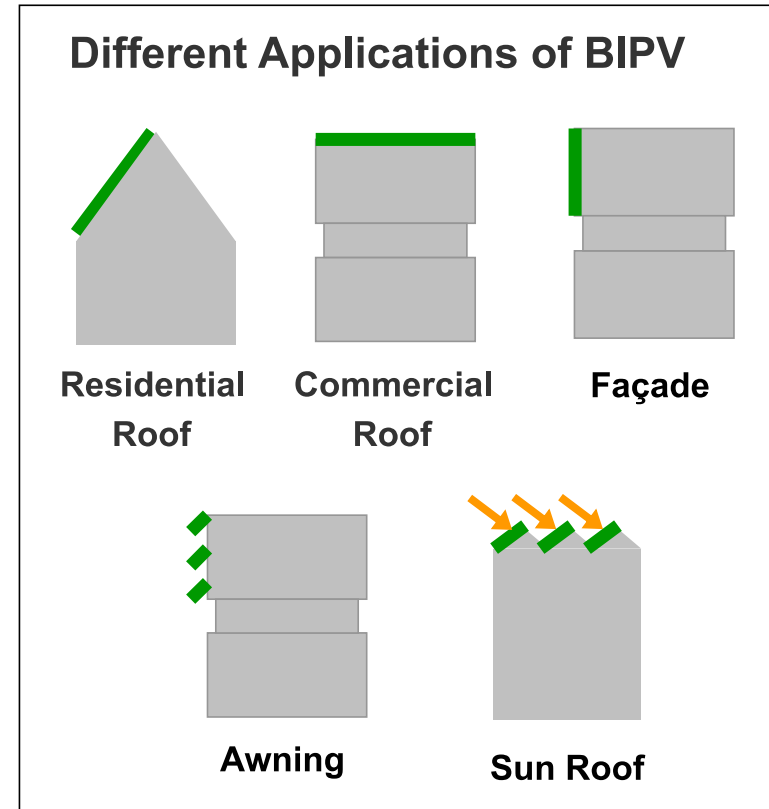
BIPV Panel

Building-integrated photovoltaics Panel



What is our Solutions?

- Polycrystalline Solar PV panels
- Polycrystalline Solar PV panels (Transparency)
- CIGS Solar PV panels
- CIGS Solar PV panels (Transparency)
- Monocrystalline Solar PV panels
- EnMS (Energy Management System) – Integrate to YATRON's **KenerSys** EnMS...





BIPV Panel

Building-integrated photovoltaics Panel



CRYSTAL Polycrystalline Solar PV



BLACKSTONE
Monocrystalline Solar PV

SYSTEM BENIFITS

- Global Level and Certificates
- 11 years long term operation.
- Comply with Most Exacting Standards
 - EN, TÜV SÜD/ISO , ITRI in the world.
- Transparency available.
- EnMS (Energy Management System) – Integrate to YATRON's **KenerSys** EnMS...



BLACKKA CIGS Solar PV



APPLICATIONS

- Curtain Wall
- Canopy
- Rooftop



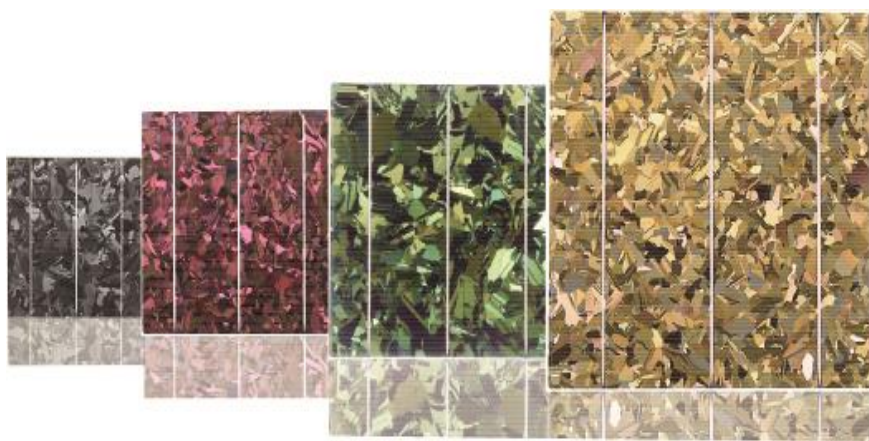
BENEFITS

- Beauty and Integrate to Building Façade Curtain wall.
- **Transparency available.**
- 4 standard colors. Other colors are available.
- **Customer made available.**



CRYSTAL Polycrystalline Solar PV





CRYSTAL Polycrystalline Solar PV

- Crystal Black : 220W
- Crystal Red : 240W
- Crystal Green : 240W
- Crystal Amber : 235W
- Size : Customer made
- Cell Type : Poly crystalline cells
- Wind Load : 5,400Pa
- IP rating : IP67
- Standards : EN, TÜV SÜD/ISO , ITRI
- Transparency available



APPLICATIONS

- Curtain Wall
- Canopy
- Rooftop

BENEFITS

- Largest Size in the world
- Beauty and Integrate to Building Façade Curtain wall.
- Easy maintenance.
- Walkable
- Transparency available 5~20%.



BLACKKA CIGS Solar PV



■ BENEFITS

- Beauty and Integrate to Building Façade Curtain wall.
- Easy maintenance.
- Walkable.
- **Transparency.**



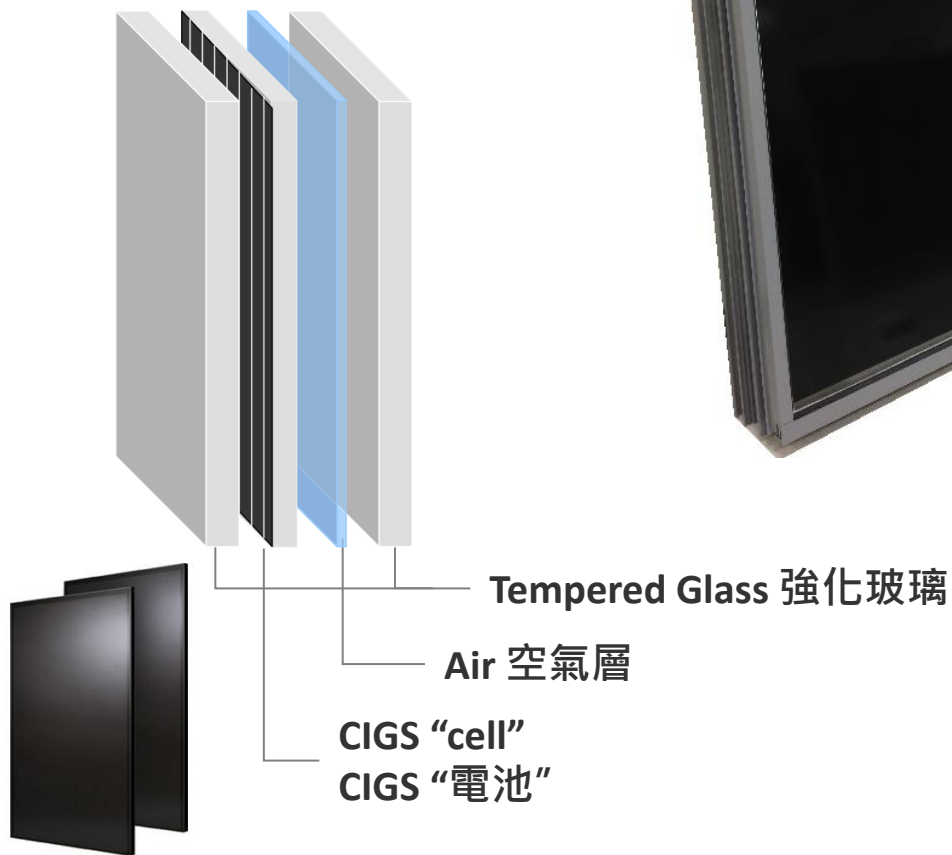
BLACKKA CIGS Solar PV





隔熱及隔音型

Thermal and Sound Insulated



BLACKKA CIGS Solar PV

耐風壓型

Heavy-Duty





BLACKKA CIGS Solar PV

- Power : 130W ~ 160W
- Size : 1100 x 1400mm
- Cell Type : CIGS cells
- Front Cover: Tempered glass
- Back Cover : Tempered glass
- Wind Load : 5,400Pa
- IP rating : IP67
- Standards : EN, TÜV SÜD/ISO , ITRI
- Glass, EVA, Glass, EVA, Glass Transparency available
 - 5~20%





APPLICATIONS

- Curtain Wall
- Canopy
- Rooftop

BENEFITS

- Highest efficiency



BLACKSTONE Monocrystalline Solar PV



BLACKSTONE Monocrystalline Solar PV

- Power : 285W ~ 310W
- Size : 1100 x 1400mm
- Cell Type : Mono crystalline cells
- Front Cover : Tempered glass
- Back Cover : Tempered glass
- Wind Load : 5,400Pa
- IP rating : IP67
- Structure : Glass, EVA, Glass, EVA, Glass
- Standards : EN 62716, EN 61701
- TÜV SÜD/ISO, ITRI



Control Panel



- Industrial Type
- BS EN, IEC, GB (EU, UK, China)
 - TÜV SÜD/ISO Certificate
 - IEC, BS EN 62208
- Excellent performances
 - IP66
 - Outdoor type Powder coating, 15 years warranty.

YT-WM Industrial Enclosure



Power analyzer and Metering



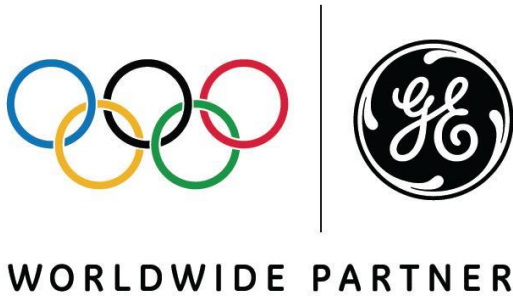
KenerSys Power Analyser

- Industrial Type
- BS EN, IEC, GB (EU, UK, China)
 - TÜV SÜD/ISO Certificate
 - IEC, BS EN, EMC
- Excellent performances and accuracy
- Power consumption and CO rating.
- Long distance RS485 communication (Modbus RTU Mode)



Global Key Partners

High Tech R&D

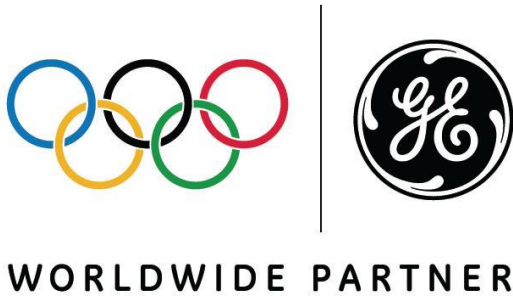


工業技術研究院
Industrial Technology
Research Institute



Global Key Partners

Energy (Power, Solar etc...)

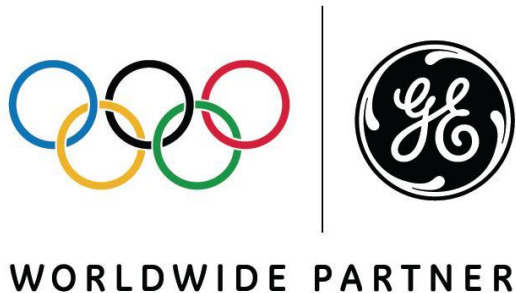


ALSTOM



Global Key Partners

Lighting Solutions



PHILIPS
Lighting





Global Key Partners

Smart City



GE

Predix



ptc



Microsoft



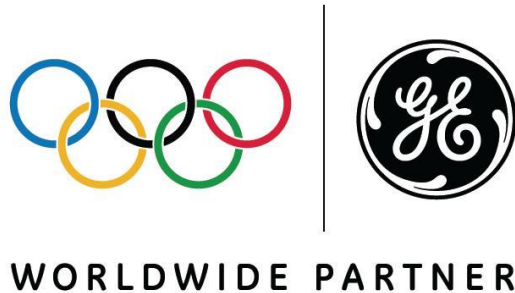
FOXCONN
鴻海科技集團





Global Key Partners

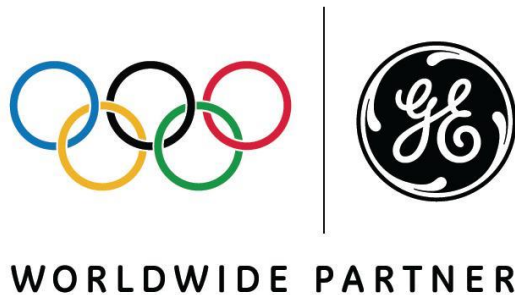
Big Data and Analytics





Global Key Partners

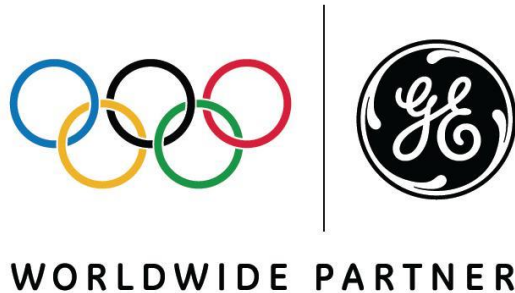
IoT – Internet of Things





Global Key Partners

Machine Learning





Global Key Partners

3rd Inspection and Test



工業技術研究院
Industrial Technology
Research Institute

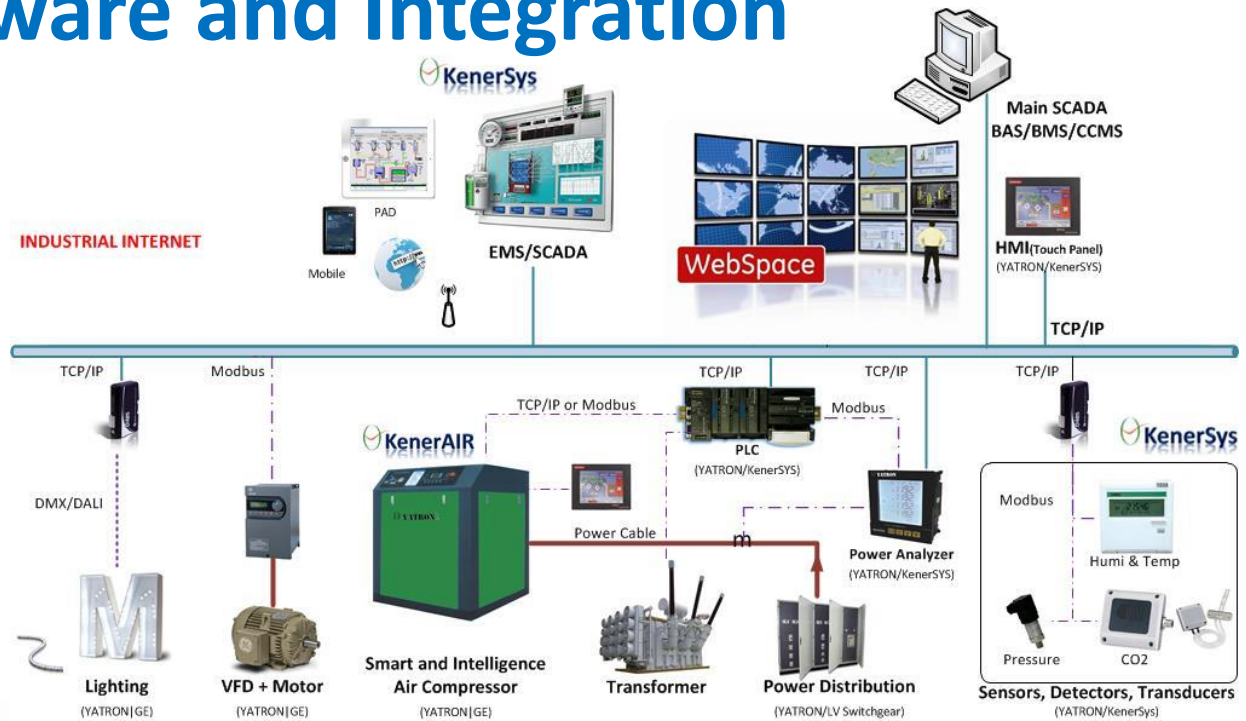


Software and Integration





Software and Integration



KenerSys Energy Management System

Integrate KenerPV to KenerSys Energy Management System

- International Level and Certificates
- Industrial Grade
- BS EN, IEC, GB (EU, UK, China)
 - TÜV SÜD/ISO Certificate
 - IEC, BS EN, EMC
- Excellent performances and accuracy





WM Series

工業電箱系列 Industrial Enclosures

- 工業級別 Industrial Type
- BS EN / IEC / GB (EU, UK, China)
 - TUV Certificate
 - IEC, BS EN 62208
- 優越性能 Excellent performances
 - IP66
 - Outdoor type Powder coating



KEY BENEFITS

- Higher efficiency 效率更高
- Higher Quality
- Celerity and accuracy 更快捷、更准确
- Power-consume reduction 降低能耗



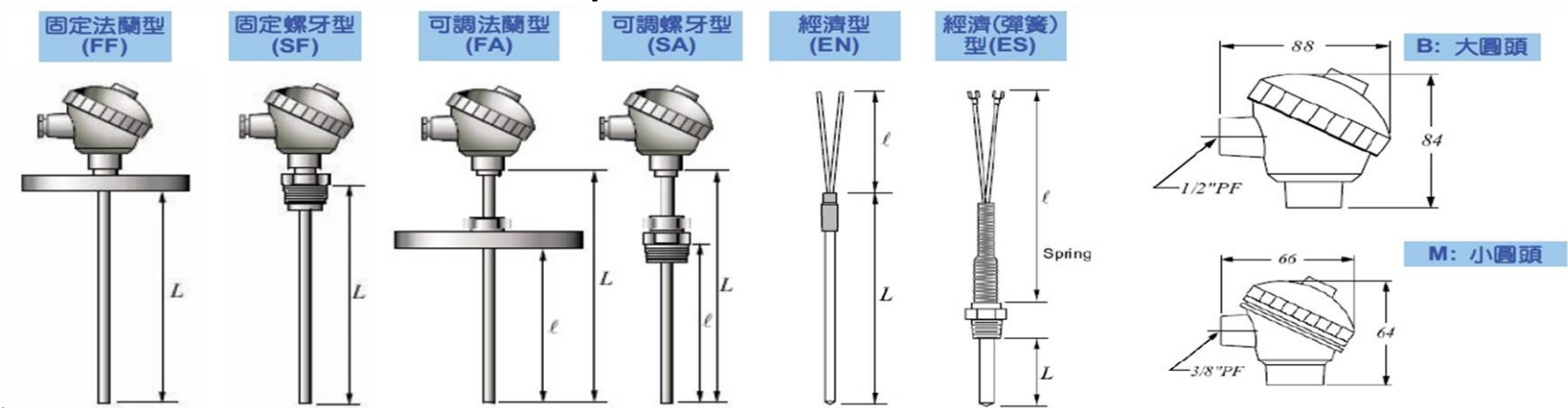
電力分析儀Power Analyzer

- 工業級別Industrial Type
- BS EN / IEC / GB (EU, UK, China)
 - CE Certificate
 - IEC, BS EN, EMC
- 優越性能Excellent performances
 - 電費比率(Cost)與二氧化碳比率(CO2)設定，可以顯示累積電費與碳排放量。
 - RS485 通訊(Modbus RTU Mode)



溫度感測器 Temperature Sensor

- 工業級別 Industrial Type
- BS EN / IEC / GB (EU, UK, China)
 - CE Certificate
 - IEC, BS EN, EMC
- 優越性能 Excellent performances





產品 Products

隔離轉換器Transmitter

- 工業級別Industrial Type
- BS EN / IEC / GB (EU, UK, China)
 - CE Certificate
 - IEC, BS EN, EMC
- 優越性能Excellent performances
 - ● 可選購帶指撥開關切換，六種常規輸出信號0-5V/0~10V/1~5V/2~10V/4~20mA/ 0~20mA 可自行切換
 - ● 雙迴路輸出完全隔離，可選擇不同信號
 - ● 設計了電源、輸入及輸出LED 指示燈，方便現場工作狀態檢視。
 - ● 規格選擇表中可指定選購0.1%精度
 - ● 17.5mm 薄型35mm 導軌安裝
 - ● 依據CE 國際標準規範設計





- **輸配電系統 Power transmission and distribution system**
 - 中, 高壓電櫃 LV, MV Switchgear
 - 低壓配電櫃 LV Switchboard
 - 低壓配電箱 LV Distribution board
 - 纖維箱 Polyester Enclosures
 - 母線槽 Busway
 - 電氣元件 Components
 - 能源管理系統 ENERGY MANAGEMENT

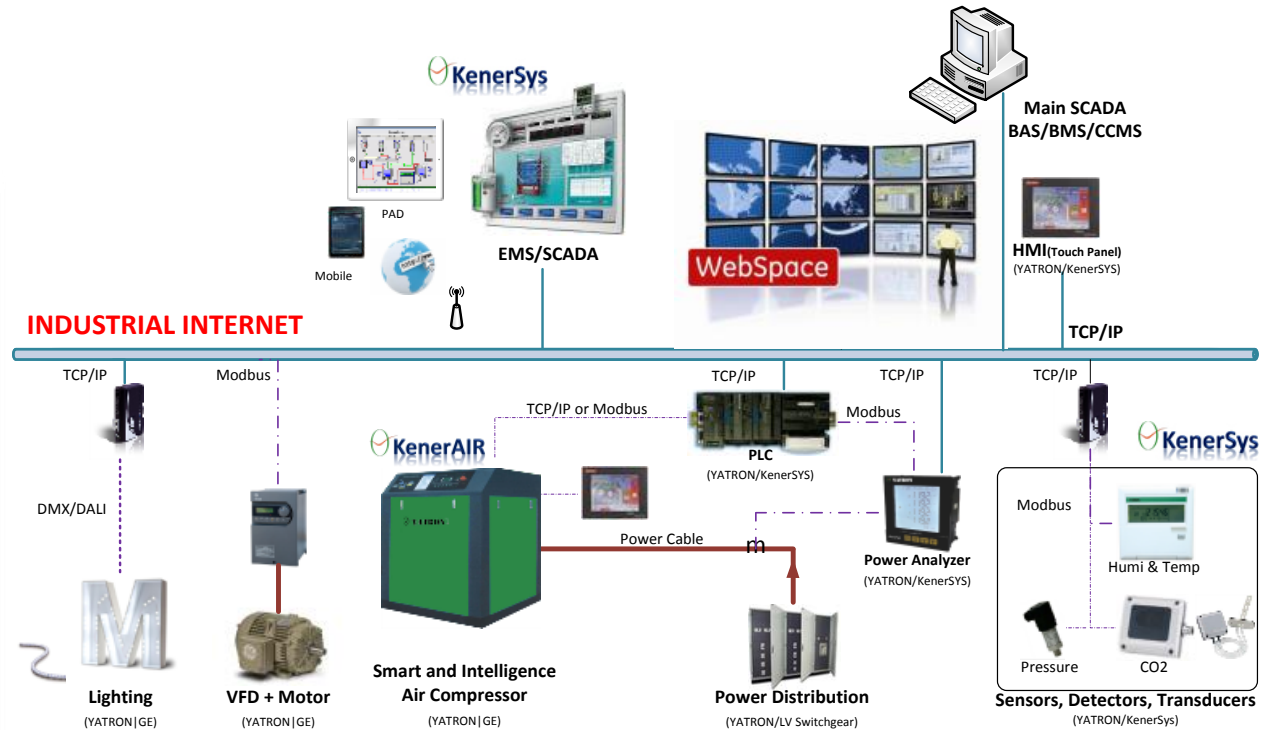




INTELLIGENCE AIR COMPRESSOR



GE





產品 PRODUCTS

- **照明系統 Lighting Solutions**
 - 傳統光源 Traditional Sources
 - 傳統燈具 Traditional Fixtures

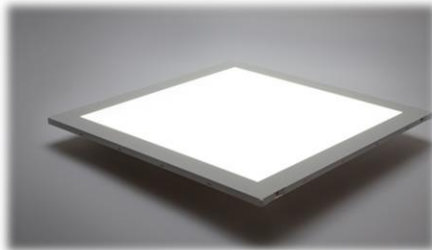




產品 PRODUCTS

- 照明系統 Lighting Solutions

- LED光源 LED Sources
- LED燈具 LED Fixtures





POWER QUALITY MANAGEMENT SYSTEM (PQMS)



RPC&HF equipment



- Capacitor units
- Reactors
- Electronic products
- Capacitor banks
- Active filters

Special applications



- FACTS solutions
- HVDC projects
- AC/DC rectifier substations

Services

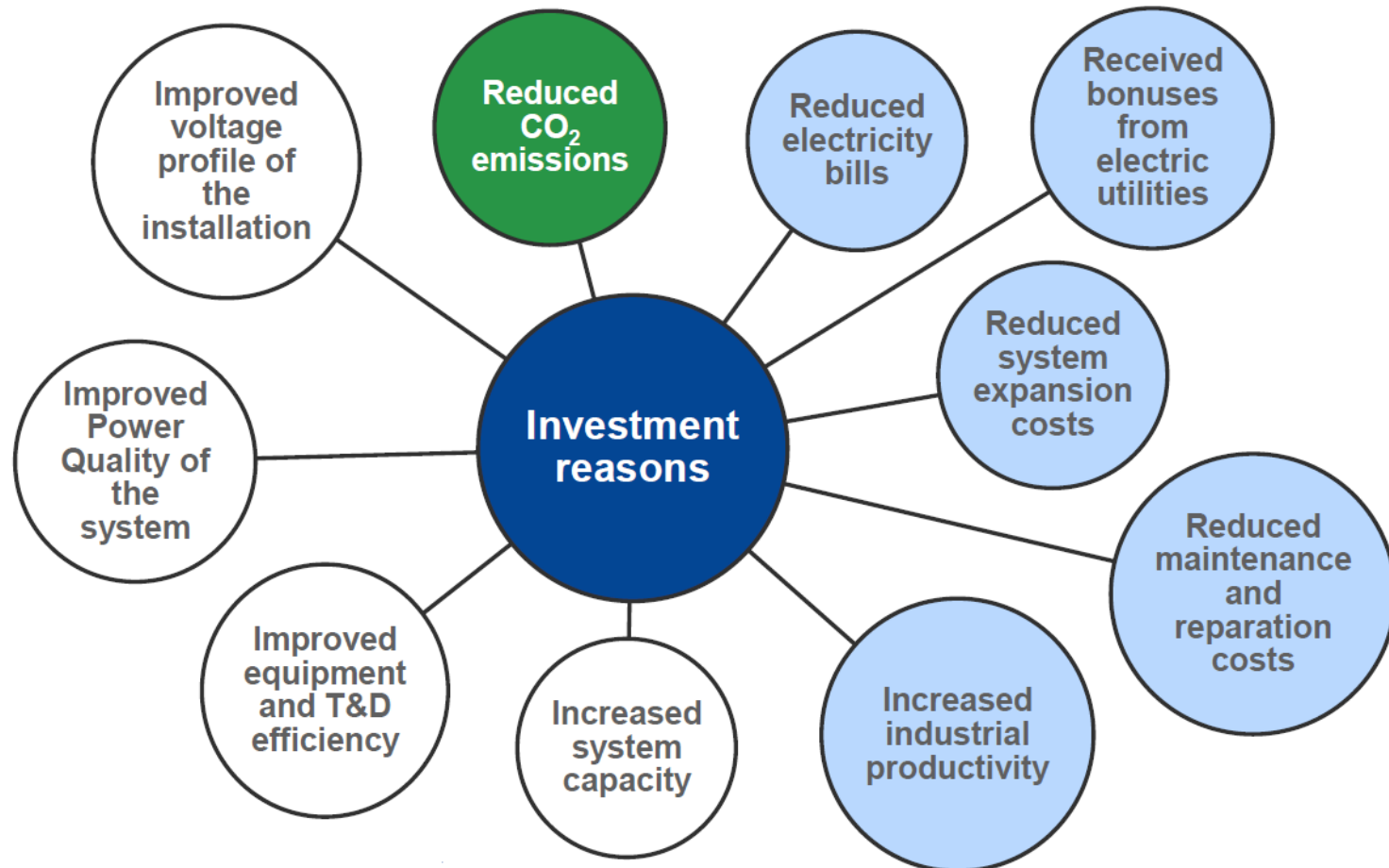


- Network consulting
- Project support
- After sales



POWER QUALITY MANAGEMENT SYSTEM (PQMS)

INVESTMENT REASONS





POWER QUALITY MANAGEMENT SYSTEM (PQMS)



INVESTMENT REASONS

■ REDUCED ELECTRICITY BILLS

- ❑ Power consumption reduced
- ❑ Low power factor penalties avoided

■ REDUCED SYSTEM EXPANSION COSTS

- ❑ Reduction in demand allows increase the loads in the installation without needing more contracted power

■ REDUCED MAINTENANCE AND REPAIR COSTS

- ❑ The lifetime of switchgear and cables increases due to reduction of current passing through them (which leads also to decreasing the operating temperature)
- ❑ Avoided blown fuses and blown distribution boards



POWER QUALITY MANAGEMENT SYSTEM (PQMS)



INVESTMENT REASONS

■ INCREASED SYSTEM CAPACITY

- ❑ Extra kVA availability from the existing supply allow the connection of new loads
- ❑ Overloaded transformers are avoided

■ IMPROVED EQUIPMENT AND T&D EFFICIENCY

- ❑ Increased active power output from power transformers
- ❑ Decreased power losses (decreased of total current flow)

■ IMPROVED POWER QUALITY OF THE SYSTEM

- ❑ Improved power factor
- ❑ Improved system stability
- ❑ Reduced harmonic content

■ IMPROVED VOLTAGE PROFILE OF THE INSTALLATION

- ❑ Rise of installation voltage
- ❑ Reduced voltage drop in cables



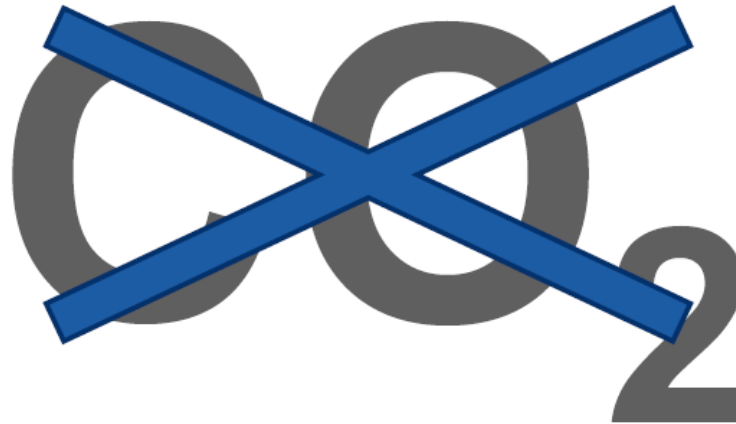
POWER QUALITY MANAGEMENT SYSTEM (PQMS)



INVESTMENT REASONS

■ ENVIRONMENTAL

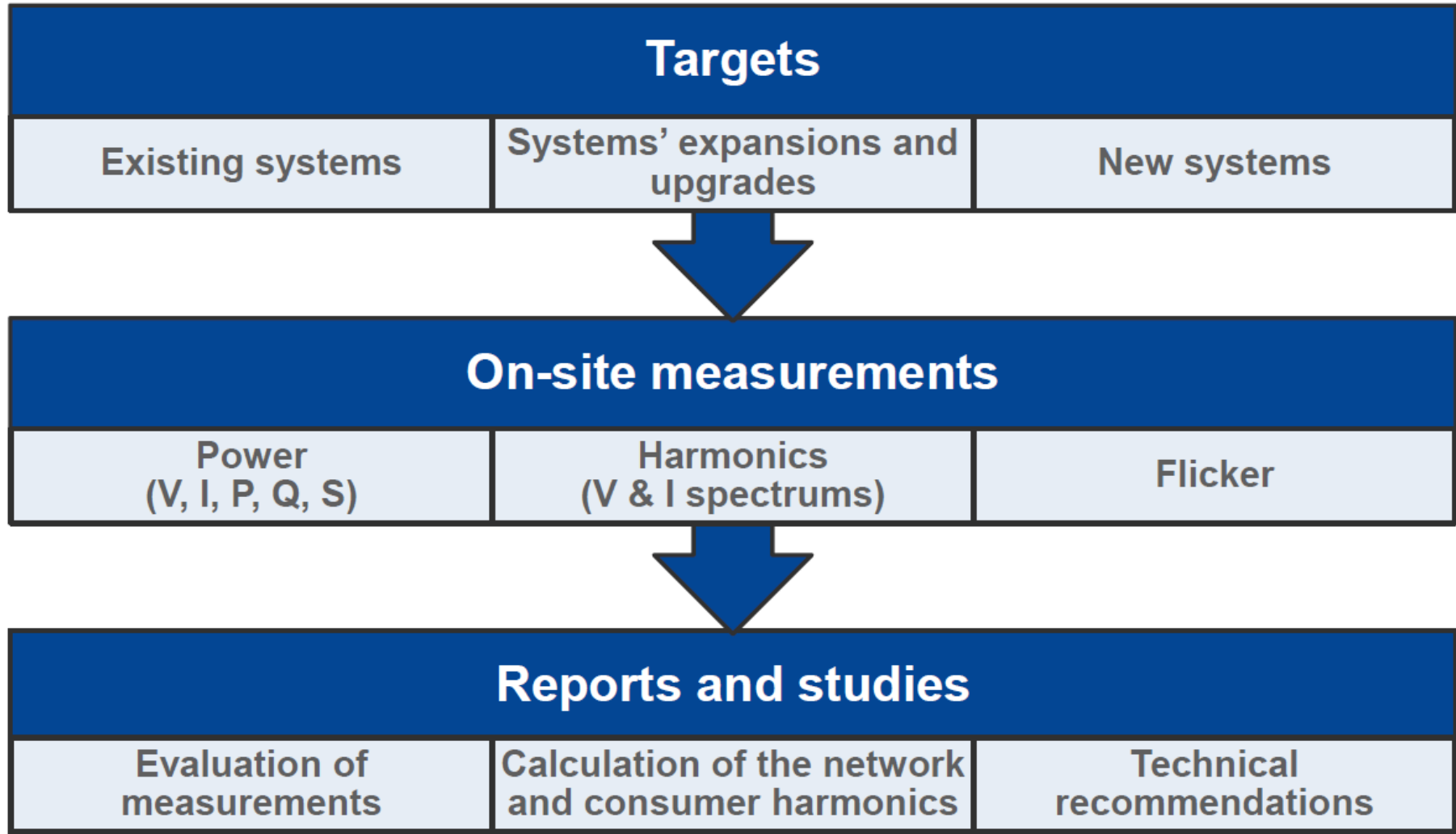
- Use of PQ&EE equipment reduces the amount of carbon emissions released into the atmosphere



**PQ&EE = Money savings + Better installation efficiency +
Reduced CO2 emissions**



POWER QUALITY MANAGEMENT SYSTEM (PQMS)





POWER QUALITY MANAGEMENT SYSTEM (PQMS)



Solution configuration

Dimensioning and
product selection

Technical support

Product and system
engineering



Erection works

Civil works

Mechanical
installation

Electrical
installation

Supervision



Commissioning

Performance and functional
conformity measurements

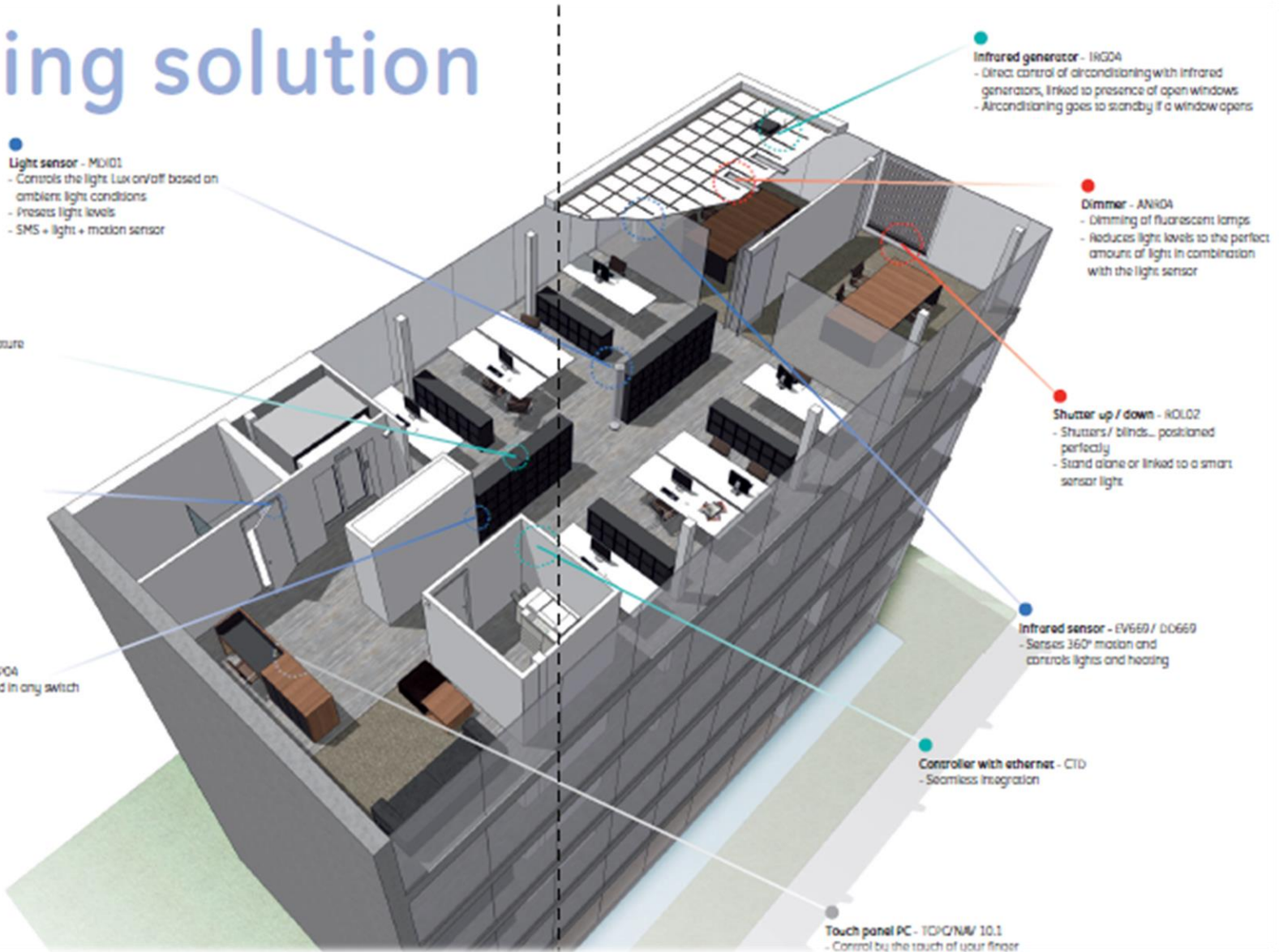
Training of operating
personnel

Commissioning reports



Factory and Building automation

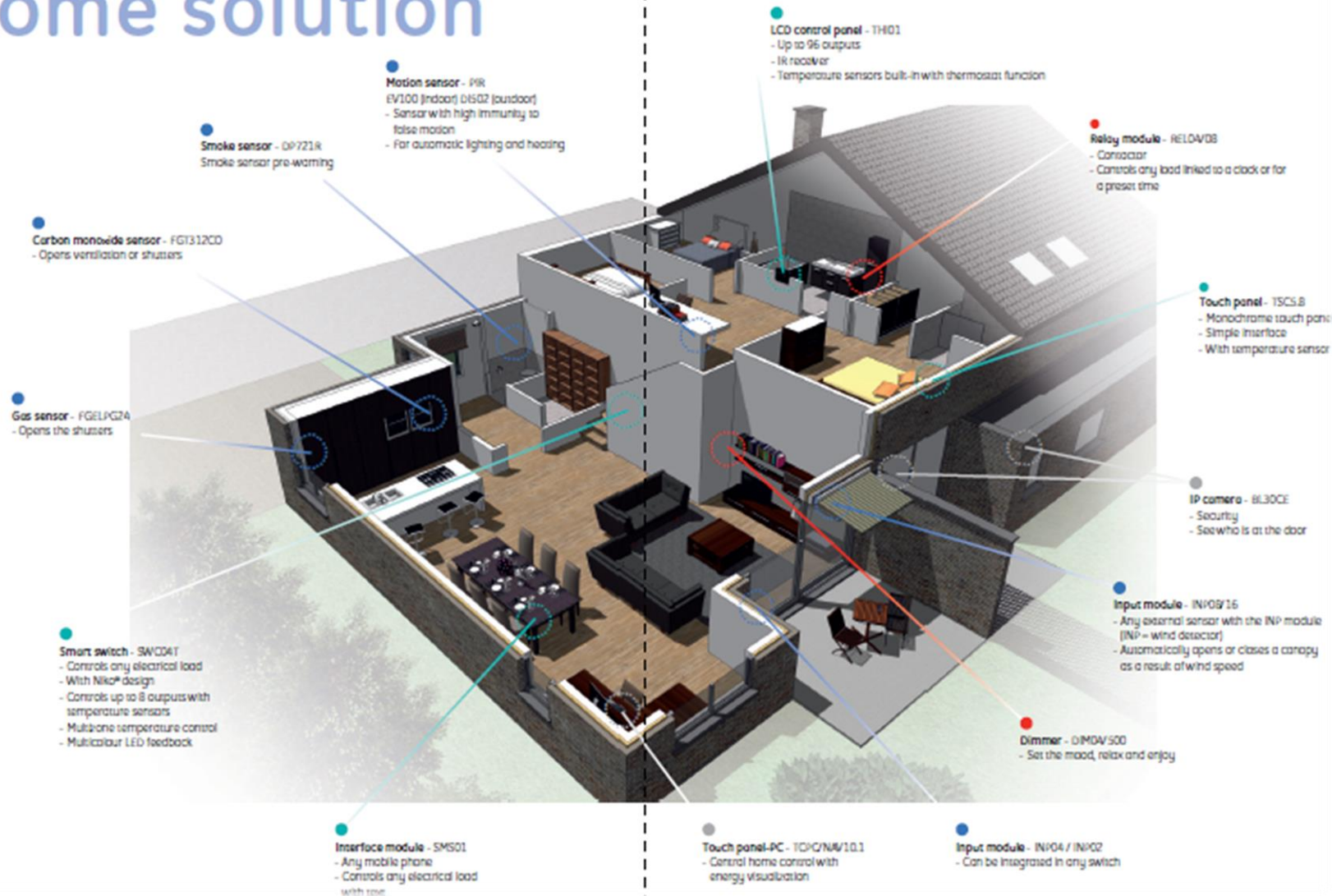
Building solution





Hotel, Home Automation

Home solution





酒店/家居自動化 Hotel/Home Automation



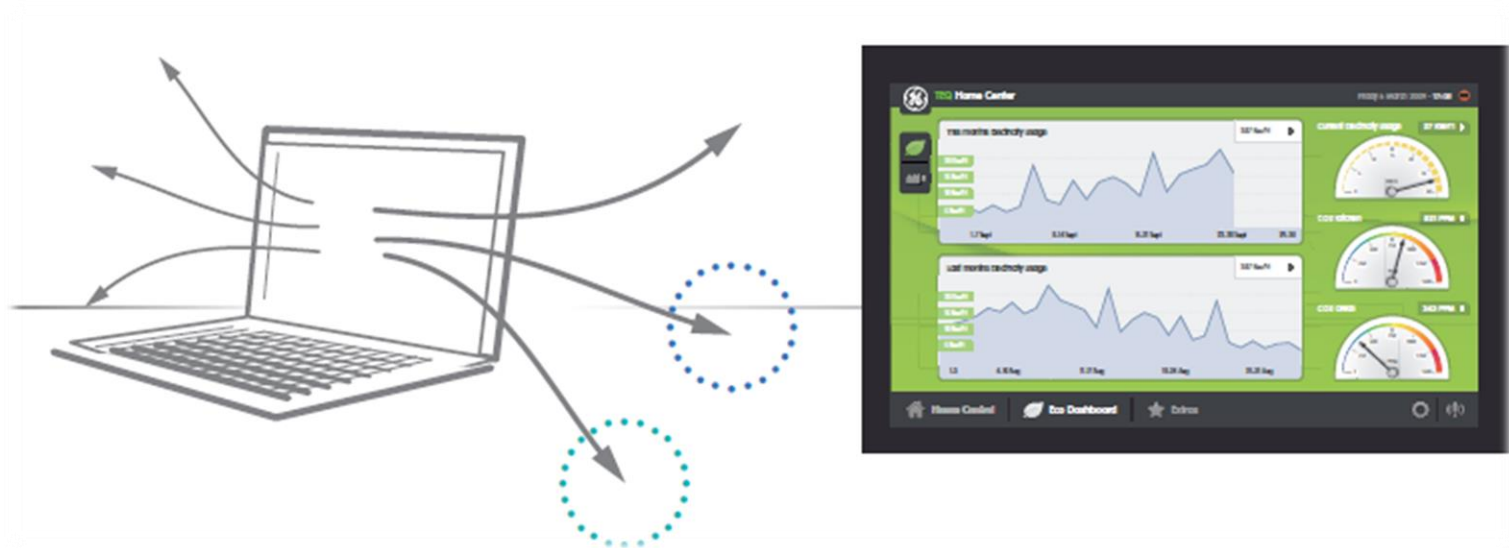
Home solution



酒店/家居自動化 Hotel/Home Automation

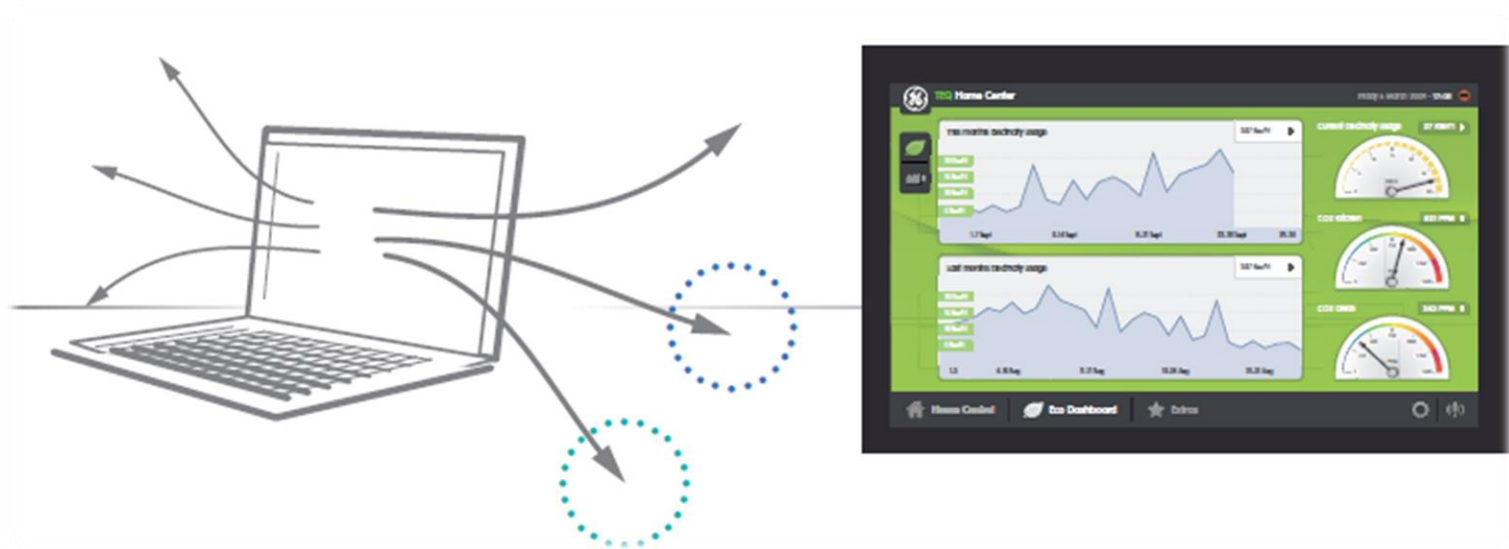


- **Home and Building Automation**
 - Lighting Control System





- 家居及樓宇自動化
 - 燈光控制系統





Flexibility

Visualize and control through the internet via a PC or mobile phone with no additional hardware⁽¹⁾

- Integrate third party infrared (IR) remote control
- Make any switch intelligent
- Easy to configure
- User friendly



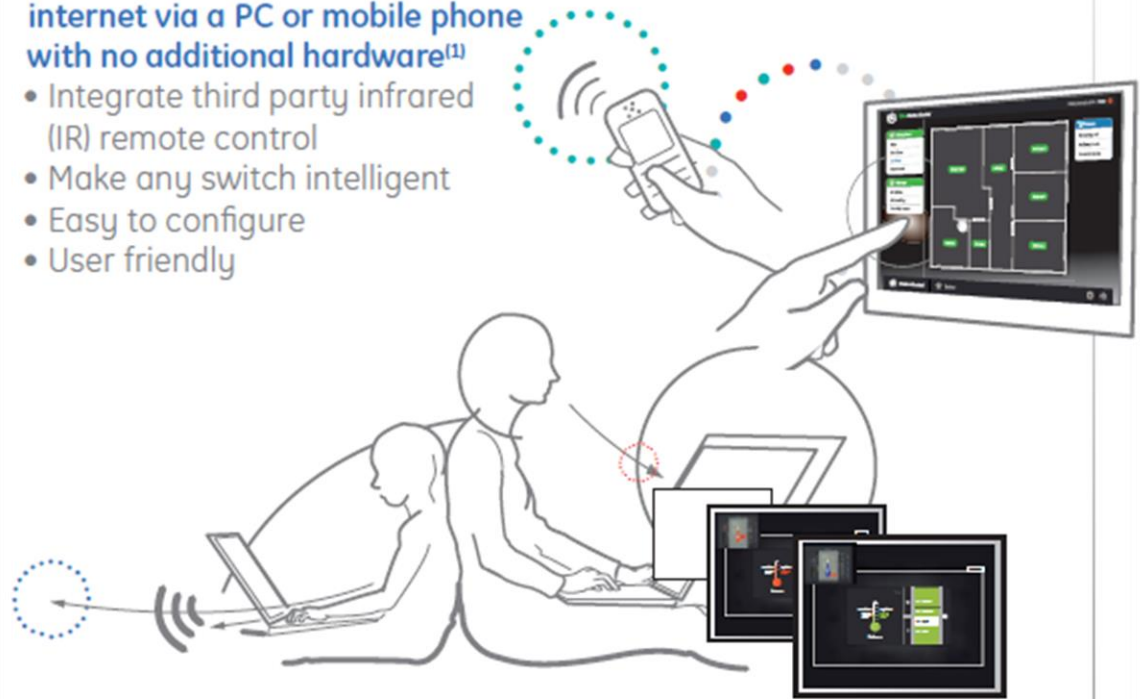
- **Home and Building Automation**
 - Lighting Control System



Flexibility

Visualize and control through the internet via a PC or mobile phone with no additional hardware⁽¹⁾

- Integrate third party infrared (IR) remote control
- Make any switch intelligent
- Easy to configure
- User friendly



- 家居及樓宇自動化
 - 燈光控制系統



核心業務 Core Business

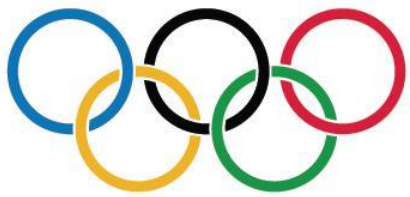


POWER PLANT
POWER SUBSTATION

GE provides the control and automation that utilities need to build a smarter more reliable power grid.



全球主要客戶 Global Key Accounts (Energy, Power Utility and Infrastructure)



WORLDWIDE PARTNER



Macau Electric



Hong Kong-CLP Power



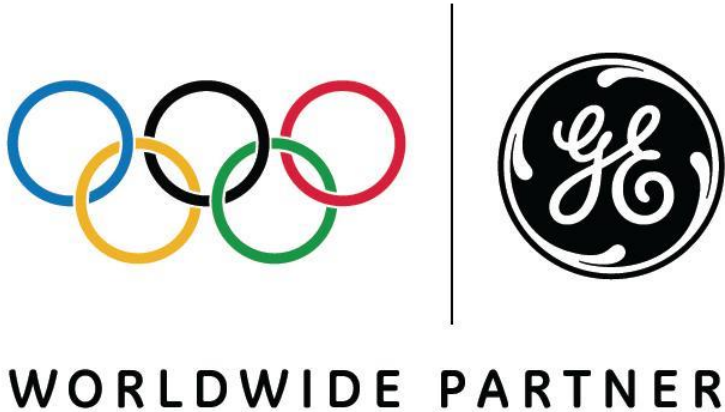
YUDEAN

China 粵電-珠海電廠

全球主要客戶 Global Key Accounts (Energy, Power Utility and Infrastructure)



全球主要客戶 Global Key Accounts (Oil & Gas)



全球主要客戶 Global Key Accounts (Hotel, Retail, Bank)



全球主要客戶 Global Key Accounts (Developer, Hotel & Resort)



全球主要客戶 Global Key Accounts (Industrial and Infrastructure)



美孚
USA



日本-松下集團
Japan



印尼-Standard Pen
Indonesia



台灣-復盛集團
Fuseng Group
Taiwan

全球主要客戶 Global Key Accounts (Government, University)



澳門民政總署

IACM - Civic and Municipal Affairs Bureau, Macau

澳門土地工務運輸局

DSSOPT- Land services, Public Works and Transport Bureau of Macau



澳門建設發展辦公室

GDI - Office for the development of infrastructure, Macau

澳門交通事務局

DSAT - Services for the affairs of traffic Bureau, Macau



澳門教育暨青年局

DSEJ - Education and Youth Services Bureau, Macau

澳門旅遊局

DST - Tourism services Bureau, Macau

全球主要客戶 Global Key Accounts (Transportation)



澳門國際機場
Macau International Airport

 澳門國際機場專營股份有限公司
-Soc.do Aeroporto Internacional de Macau S.A.R.L.
Macau International Airport Co. Ltd.




香港 | HONG KONG
國際機場 | INTERNATIONAL
AIRPORT



香港-港鐵
Hong Kong-Metro



全球主要客戶 Global Key Accounts (工程承包商EPC)



澳門-中國建築
China Construction



中国交通建设
CHINA COMMUNICATIONS CONSTRUCTION
China Communications
Construction



中国铁建
中國鐵建
China Railway Construction



廣東建工
Guangdong Construction
Engineering Group Co., Ltd
China



廣東省工業設備安裝公司
Guangdong Industrial
Equipment Inst. Corp.
China



French Corporation

全球主要客戶Global Key Accounts (工程承包商EPC)



台灣-中鼎工程
CTCI Engineering
Taiwan



台灣-鼎台營造
TingTai Construction
Taiwan



澳門-豪進建築
Hou Chun Construction
Macau



香港-高雅
Krueger Engineering
Hong Kong



WORLDWIDE PARTNER



奥林匹克全球合作伙伴



PROUD PARTNER



PROUD PARTNER



經營理念 Business Concept

- 智慧成就夢想

Intelligence Makes the Dream Come True

- 高效率 | 高質量 | 高服務

Efficiency | Quality | Service

- 誠心 | 承諾 | 成功

Sincerity | Commitment | Success



競爭/優勢 Competition/Advantage

客戶技術支持與服務

Customer support and service

客戶的滿意和認同是我們永恆的追求!

■ 全球GE及台灣竹科的核心技術和全力支持 *GE Global technical support*

- 日騰已成為GE Energy在中國澳門、香港、台灣、珠海, 甚至亞洲的重要合作伙伴
- YATRON is the Core Business partner of GE Energy in Macau, HK, Taiwan, China and Asia

■ 服務熱線 *Service hotline*

- 24小時, 7日電話接待, 2 小時內回復處理意見
- 24/7 hrs hotline and within 2 hrs respond

■ 緊急服務(收費) *Emergency service(Pay)*

- 24小時, 7日緊急上門服務
- 24/7 hours Emergency On site service

■ 上門服務(免費) *On site service(Free)*

- 根據客戶具體需要, 安排專人上門服務
- According to customer's requirement to provide the site service

■ 技術更新 *Technical update*

- 及時為客戶提供最領先的能源、輸配電、工業及樓宇自動化產品和技術
- Update the newest and leading Products & technology of Energy, Power distribution, Industrial and Building Automation



Macau Headquarter

■ FUNCTION

- Sales, Finance, Administration, Engineering department

■ LOCATION

- Central
- 20/F, AIA Tower, 251A-301 Avenida Comercial de Macau, Macau

■ ADVANTAGE

- As one of the one country, two systems beneficiaries, we have advantage on talent and policy resources.
- As a Chinese and Western cultural exchanging location, we know the changes and demand of industry.





澳門總部 Macau Headquarter

■ 功能 FUNCTION

- 銷售部、財務部、行政部、工程部

■ 位置 LOCATION

- 中區
- 澳門商業大馬路251A-301號友邦廣場20樓

■ 優勢 ADVANTAGE

- 作為一國兩制的受益者, 在人才和政策資源上有著非常大優勢.
- 中西方文化交流的聚集地, 最快瞭解行業的動態與需求.





香港分公司 Hong Kong Branch

■ 功能 FUNCTION

- 銷售部、財務部、行政部、工程部

■ 位置 LOCATION

- 香港中環
- 香港中環康樂廣場8號交易廣場2座8樓

■ 優勢 ADVANTAGE

- 作為一國兩制的受益者, 在人才和政策資源上有著非常大優勢.
- 中西方文化交流的聚集地, 最快瞭解行業的動態與需求.





台灣分公司 Taiwan Branch

■ 功能 FUNCTION

- 銷售部、財務部、行政部、工程部

■ 位置 LOCATION

- 台北市中心
- 信義路5段7號 台北101大樓37樓

■ 優勢 ADVANTAGE

- 位於台北金融中心, 資訊發達, 造就商機.





馬來西亞-東盟總部

Malaysia-Headquarter in ASEAN

■ 功能 FUNCTION

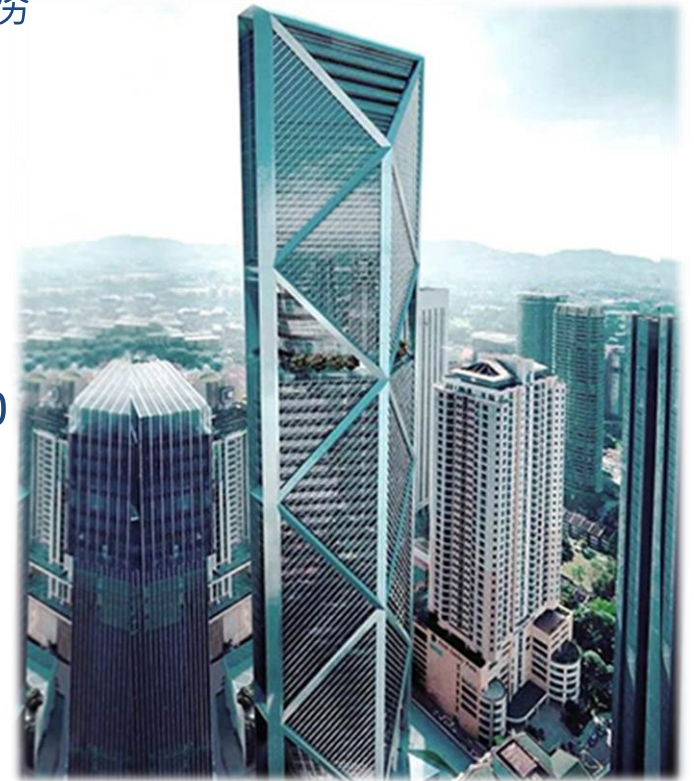
- 銷售部、財務部、行政部、工程部、客戶服務中心

■ 位置 LOCATION

- 吉隆坡市中心 KLCC
- Level 33, ILHAM Tower, No.8, Jalan Binjai, 50450 Kuala Lumpur, Malaysia

■ 優勢 ADVANTAGE

- 位於東南亞中心
- 位於馬來西亞金融中心, 資訊發達, 造就商機.





珠海工廠

■ 功能 FUNCTION

生產 Manufacture

- 成套開關設備和控制設備
- 能源管理系統組件
- 照明燈具及光源
- 智能空氣壓縮機系統

■ 位置 LOCATION

- 珠海經濟特區
- 國家高新區
- 中國廣東省珠海市國家高新區金鼎科技工業園金恆二路12號

■ 優勢 ADVANTAGE

- 位於台北與京珠(京澳)/沿海高速毗鄰, 交通便利, 節省運輸成本.
- 鄰近中山大學、北京理工大學、北京師範大學、暨南大學等著名高等學府, 產學互補, 吸納更多優秀人才.





中國 | 珠海工廠



活動區



廠區大門及生產大樓



會議室

會議室





珠海工廠 Zhuhai Factory



Assembly Area組裝區



Assembly Area
組裝區



Assembly Area組裝區



Assembly Area組裝區



Award | Hong Kong



《鏡報》月刊主辦

傑出企業

社會責任獎

CSR (Corporate Social Responsibility) by MIRROR POST

Chief Executive of Hong Kong, CY Leung

27th March, 2015 Year





獎項 Award | Hong Kong

積極參與企業社會責任獎評選活動，獲「企業社會責任大使」稱號
Participating in Corporate Social Responsibility Award (CSR)
Selection Activities, Became One of the CSR Ambassador

日騰是一家以能源管理和建設可持續發展為發展目標的企業。社會的發展與企業的發展息息相關。社會發展得好，為企業提供良好經濟的環境。企業發展得好了，力所能及地回饋社會，創造更好的經濟環境。如此良性循環。日騰能源集團就是在這個理念經營下才有今天的成績。

於2014年11月24日，日騰獲選「企業社會責任大使」稱號。

YATRON is an enterprises specializing on energy management and sustainably development as goals. The development of the society and the enterprise is closely related to each other. Provide a good economic environment for enterprises, so that enterprises development better; Serving society the best, Society will create a better economic environment for enterprises. This is such a virtuous cycle. YATRON energy group knows this business philosophy and practice it personally. Thus, we get the achievement today.

On 24th Nov 2014, YATRON was awarded "Corporate Social Responsibility Ambassador" title.





Award | Hong Kong



《鏡報》月刊主辦

傑出企業社會責任獎

CSR (Corporate Social Responsibility) by MIRROR POST

Chief Executive of Hong Kong, CY Leung

27th March, 2015 Year





Award | Macau



YATRON Energy Group
BUSINESS AWARDS OF MACAU
Environmental Performance
26th November, 2015 Year



awardsmacau.com



Recommendation



Macau Electric

From: Companhia de Electricidade de Macau - CEM, S.A.

To: Wynn Resorts (Macau) S.A.
Rua Cidade de Sintra
NAPE, Macau

Attention: Ms. Kimberly Tan, Director of Purchasing
Email: Kimberly.Tan@wynnmacau.com
Tel: (853) 8986 5401

Subject: Trade Reference Check

This is to certify that the service of YATRON Engineering Co., Ltd. has been exceptional.
We would have no hesitation in recommending them as a supplier to you.

From: Four Seasons Hotel Macao, Cotai Strip®

To: Wynn Resorts (Macau) S.A.
Rua Cidade de Sintra
NAPE, Macau

Attention: Ms. Kimberly Tan, Director of Purchasing
Email: Kimberly.Tan@wynnmacau.com
Tel: (853) 8986 5401

Authorized Signatory:

(Cheong Chi Fai)

Designation of the signatory: Manager/Procurement and Logistics Department.

Date: 02nd Jan, 2014

Tel: +853 28339933

Company Chop:

Email address: ccf.cheung@cem-macau.com



Subject: Trade Reference Check

This is to certify that the service of YATRON Engineering Co., Ltd. has been exceptional.
We would have no hesitation in recommending them as a supplier to you.

Authorized Signatory:

(Kennix Pak)

Designation of the signatory: Engineering Coordinator

Date: 02nd Jan, 2014

Tel: +853 81128506

Company Chop:

Email address: Kennix.Pak@fourseasons.com



FOUR SEASONS
Hotels and Resorts



Multimedia | Exhibition



MASTV | 澳亞衛視
WWW.IMASTV.COM

Macau Asia Satellite Television
Macau



GUANGZHOU | CHINA



Mirror Post | Hong Kong



Macau

The Technology Showcase for the
**Building, Electrical Engineering
and Security Industries**

Hong Kong
Convention and
Exhibition Centre

Featuring





Multimedia | Exhibition



MASTV | 澳亞衛視
WWW.IMASTV.COM

Macau Asia Satellite Television
Macau



GUANGZHOU | CHINA



Mirror Post | Hong Kong



Macau

The Technology Showcase for the
**Building, Electrical Engineering
and Security Industries**

Hong Kong
Convention and
Exhibition Centre

Featuring





Media | Seminar | Macau, Hong Kong

2017/01

CSR企業社會責任研討會 香港鏡報 – 香港城市大學

2017年01月刊

YATRON 騰 能源集團

ISO 50001

KenerSys

Energy Management System (EnMS)

能源管理系統-軟件及硬件一站式方案

- 節省能源[電、熱、氣、水]
- 環境及能源管理、監察和控制
- 系統和效率持續改善高達 50%
- 投資回報 ROI, 1~3 年
- 十年營運, 0 故障紀錄

環境 經濟 社會

- 可持續發展
- 室內環境質量
- 企業社會責任 CSR

ISO 9001, ISO 14001, ISO 50001 的一站式服務
環境及能源管理課程、認證、取條件建設、分析、持續改善

50% SAVINGS

中國(澳門)香港(台灣)馬來西亞(新加坡)越南(印尼)緬甸

WWW.YATRONGROUP.COM



CSR企業社會責任研討會

香港鏡報 – 香港城市大學

2017年01月刊



特稿

為何要用最好的能源管理系統

——ISO 50001能源管理系統概論

◎文/本刊記者

西方工業革命使人類工業文明前進了一大步，能源效益提高了很多。伴隨着工業革命的開展，也給生態環境和城市發展帶來了破壞性影響。在二十一世紀的今天，我們應重新思考要否擁抱生態文明？我們與生俱來肩負着責任，不論是對家庭、朋友、社會、環境，ISO 50001令我們思考到我們要繼續造成能源虛耗，還是應有效地管理能源？本刊將推出系列關於善用能源管理和對如何履行保護環境責任的文章，以饗讀者。

聯合國因應氣候變遷，多年來透過各國政府、民間和標準化組織的持續努力，制定了各種國際標準和協議(簡述如下)。希望各國和地區，在享受經濟成果之餘，對自己國家和國民以及全球生態平衡作出應有的回饋和責任。

■**全球性協議：《京都協議書》**，1997年12月在日本京都共有183個國家通過了該條約(超過全球排放量的61%)，條約於2005年2月16日開始強制生效。《巴黎協議》取代將於2020年到期的《京都協議書》。2015年在巴黎，工業革命啟動近250年後，全球各國達成減少溫室氣體(二氧化碳為主)排放的協定，展開挽救人類免於氣候變遷帶來毀滅的第一步，也等於宣告了工業革命後即賴石化燃料帶來成長的時代終結，低碳與永續的時代正式展開。《巴黎協議》目標是在二十一世紀後半，將全球氣溫上升限制在與工業革命前相比上升2°C以下，甚至希望能達到限制在1.5°C。《巴黎協議》亦已於2016年11月4日正式生效啟動，並通過中國簽定，延伸至香港和澳門特區。

■**國際標準化組織ISO及歐盟關於《可持續發展》之相關標準**：ISO 26000社會責任指引、ISO

14001環境管理系統、ISO 50001 / EN 16001能源管理系統。

■國際標準化組織ISO及歐盟標準詳細介紹

■**ISO 26000社會責任指引**簡稱(SR)：①SR中7大要素的《環境》要素着重於能源管理系統、環境管理系統、綠色產品管理系統、溫室氣體管理系統。②近年全球暖化造成氣候變遷的問題日趨嚴重，企業須承擔的企業社會責任亦隨之增加。目前國際間由投信機構發起的「碳揭露計劃」，以作為投資決策之考量因素。歐盟的整合性產品環保政策，已發展一系列與市場機制相結合的環保指令，只有符合相關規範之產品方能進入歐盟市場。

■**ISO 14001環境管理系統**：①ISO從1993年開始制定的一系列環境管理國際標準。②環境污染與公害事件的產生使人們從治理污染的過程中逐步認識到，要有有效的保護環境，人類社會必須對自身的經濟發展行為加強管理。

■**ISO 50001/EN 16001能源管理系統**：①人類從發展能源、使用能源、節約能源，現在必須升高其層次至管理能源。②EN 16001：歐盟於2009年7月發布，期望合理地管理能源。③ISO 50001：由ISO於2011年6月頒布，將能源效率納入管理辦法框架中；



更好地利用現有能源消耗資產制定標準、測量、記錄和報告能源強度，改進及其預計的對溫室氣體排放的影響；能源資料的透明管理和交流；能源管理的最有效做法和良好的能源管理行為；評估並確定新能效技術的實施和其優先順序；通過供應鏈促進能源效率的框架和溫室氣體排放計劃有關的能源管理改進。④ISO 50001/EN 16001包括：能源審查、能源基準、能源績效指標(EnPIs)、能源目標與能源指標等，最終達到管理能源。⑤ISO 50001遵循PDCA(Plan計劃-Do執行-Check檢查-Action行動)的原則，與ISO 9001品質管理和ISO 14001環境管理有最大的相容性。⑥在今天，有效能源管理的議題對任何企業的成功，比以往任何時候更具有重要性。除了提升能源效率外，能源管理系統可降低成本並減少溫室氣體排放和提升室內環境質量，讓員工和企業組織更具有國際競爭優勢。⑦ISO 50001適用於任何企業組織，不論其規模、所屬的產業部門或地理位置。如果企業組織屬於能源密集的產業，或面臨溫室氣體排放立法的產業，這項標準尤其重要。

⑧**ISO 50001 能源管理的優點**：

(i) 降低成本：透過架構化的方法以確認、監測及管理能源消耗，降低能源支出。

(ii) 改善企業績效：找出最高能源效率方案，影響員工行為以減少能源消耗，進而促進更高的生產力。

(iii) 符合法律法規：達到目前或未來的強制性能源效率目標及/或減少溫室氣體排放的法律要求。

(iv) 減少溫室氣體排放：於現在及未來達成利害關係人的期待/響應企業社會責任之義務。

(v) 整合管理系統：將您的能源管理系統與既有的管理系統(ISO 9001, ISO 14001, ISO 18001等)整合，提高管理效益，使利益擴增。

(vi) 國際調查機構BSI進行全球最大的能源管理調查，結果顯示：①78%資深經理人相信能源管理是重要或非常重要，其中能源管理代表有64%為董事會層級。②為何需要能源管理系統？79%表示成本控制是能源管理的主要原因，35%認為氣候變遷，28%

認為可以提高公司聲譽。

●先進技術YATRON KenerSys和TÜV SÜD

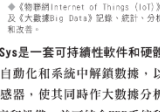
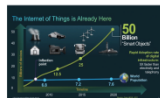
①**ISO 50001能源管理認證**，使企業組織可利用標準化流程，進行能源管理和程序架構。高效和實用的能源管理系統，需要使用大量傳感器、儀錶等收集大量數據作為系統分析和改善之用。這些資料和數據極其大量和複雜，用傳統方法，使用人力抄寫方式進行數據記錄實在是不可能，只有高效、穩定和智能化的自動化能源管理系統，才能協助用戶持續地作最有效的記錄、分析和改善。

②**日德能源之能源管理系統KenerSys**以ISO 9001, ISO 14001及ISO 50001為基礎和核心，透過與國際能源和工業巨頭如：GE美國通用電氣、Microsoft微軟、德國TÜV SÜD認證、ITRI台灣工業技術研究院的技術、課程和認證合作，結合《物聯網Internet of Things (IoT)》及《大數據Big Data》技術之應用和分析，長遠與用戶共同對系統持續改善，創造更高附加價值和收益。

③**YATRON KenerSys**是一套可持續性軟件和硬體解決方案，在現有的自動化和系統中解鎖數據，以及利用大量儀錶和傳感器，使其同時作大數據分析和消除過度使用的程序和設備。並可結合ERP系統和KPI整合使用。

④**KenerSys**不只是節能系統，更其是一系列的高效能能源系統。

⑤**適量減少和控制使用公用設施的投入**，提升工作環境質量和員工動力，節省最高達50%的能源消耗，如：電力、鮮風冷氣系統、燃氣、水、壓縮空氣等。☑



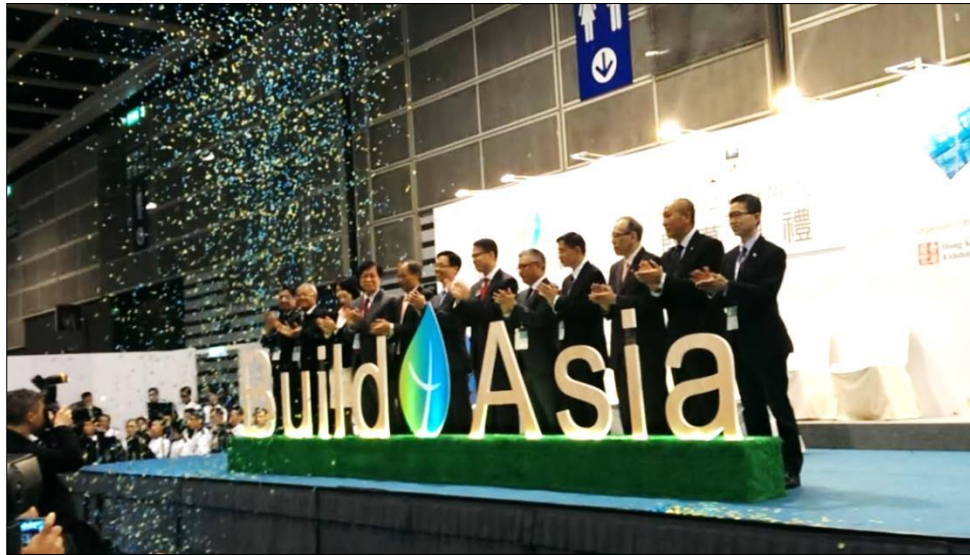
2017年1月 第1期 7



Exhibition | Hong Kong

YATRON exhibit the Build4Asia 2014 in Hong Kong

亞洲建築展覽是港澳面向亞洲最大的建築設備展覽會。2014/05/07在香港會議展覽中心盛大開幕。日騰作為參展商,不僅向來自世界各國的設備廠商及客人展現了日騰產品的硬實力,而且也讓日騰在邁向亞洲策略贏了個開門紅。



Build4Asia is the largest building exhibition in Hong Kong and Macao for building equipment in Asia. 2014/05/07 grand opening at the Hong Kong Convention and Exhibition center. As an exhibitor, YATRON not only shown our high quality products to clients from all over the world, but also got a quite good beginning.



Media | Exhibition | Guangzhou 2010/03/08

CHIAF / SIAF 2010 - 中國(廣州)國際工業 控制自動化及儀器儀表展覽會 CHIAF / SIAF 2010 - Guangzhou

日騰(YATRON)於2010年3月8-11日期間再度參加《CHIFA/SIAF 2010 - 中國廣州國際工業自動化技術及裝備展覽會(SIAF)》。SIAF展會由全球最大的工業自動化展SPS及華南最大的工業自動化展CHIFA在中國的完美結合，展會盛大演繹，恢宏共享。

日騰在展會上認識了大量行業伙伴和客戶。



SIAF是中國最大的自動化展覽會
SIAF is the largest Automation exhibition in China.



智慧自動化工廠及管理系統 (模擬)



Media | Exhibition | Guangzhou 2009/03/04

13屆中國(廣州)國際工業控制自動化及儀器儀表展覽會 13th (CHIFA 2009) in Guangzhou

日騰 (YATRON) 於 2009 年 3 月 4-7 日期間參加《CHIFA 2009 - 第13屆中國廣州國際工業控制自動化及儀器儀表展覽會》，該展會被廣州市評為"廣州十大品牌展會"之一。

YATRON認為：作為一個品牌價值優秀的展覽會，均會為展商與觀眾提供理想的商務平台，信息在這裡交匯、價值在這裡實現。



CHIAF 是中國最大的自動化展覽會
CHIAF is the largest Automation exhibition in China.





Press conference | Macau, Hong Kong

YATRON Energy Group Business Development in Asia Press Conference

2014/08/19 YATRON Energy Group Business Development in Asia Press Conference was held in Sands City Center Sheraton Hotel. Taking this opportunity for more Macau and Asian company have a in-depth understanding of YATRON business and products. In hope of provide assistance from different aspects so that to promote the enterprises to establish a set of efficient energy management systems and solutions.

The conference invited the Chinese Liaison Office Ministry of economic management of Enterprise Department Mr. Yan, senior manager of Macao productivity and technology transfer center director office Mr. Zeng, General Manager of General Electric (GE) Group of Energy Industry system in North Asia and Greater China Mr. Liu Fang and representative Li Qing, Macao Electric Ltd power system Dispatching Department manager Mr. He and Purchasing Department manager Mr. Zhang, Macao the Chinese General Chamber of Commerce, Executive Director Mr. Chen, Vice President of the Macao small and Medium Enterprises Association General Chamber of Commerce Mr. Ye and over 150 overseas guests and business political representatives attended the activities, lively atmosphere.



Chairman and CEO of YATRON Energy Group
Interview by TDM Macau



Press Conference



Press conference | Macau, Hong Kong

YATRON Energy Group Chairman and CEO Mr. Kenneth Chan said, with the Hong Kong Zhuhai Macao Bridge Construction and Hengqin new area development project opportunity, make the development and demand of energy management, wisdom city building get the attention and promotion focus. YATRON was founded in 2006, now we are focusing on service in Macau. With the support of all parties, the group's business gradually extended to other regions, the realization of Macau enterprises to go out of the target. Provide solutions for customers. Then, respectively YATRON energy group held agreement signing ceremony with Macao Investment Development Company Limited cooperation for "Studio City Macau", "Venetian Resort 110kV substation" projects.

In this business development conference, hope that with the help of our Asia layout, and General Electric (GE) technology, financial support, to help enterprises to go out. There are a number of projects in Hengqin development, participate in some government infrastructure, commercial buildings, including the LED lighting technology, motor control.

Technical promotion will be actively facing to relevant departments in future. 8 years since YATRON was found, we kept training and had hired a number of local engineers, they are using GE technology and the new technology for the working.

GE Energy Group Industrial System in North Asia and greater China GM Mr. Liu Fang said YATRON energy group is a long-term partner in China, the future will support YATRON in the technology, finance and other aspects, hoped YATRON will develop in scale, or even go public.

@COPYRIGHT YATRON



Left to Right:
Chairman and CEO (Kenneth Chan) | Managing Director of Asia (Christophe Fliou) YATRON Energy Group



James Liu | General Manager, North Asia and Greater China
GE Energy, Industrial Solutions



Press conference | Macau, Hong Kong

2014/08/19



陳超雄 Kenneth Chan
行政總裁 CEO
日騰能源集團



PLAY/播放



PLAY/播放



PLAY/播放



PLAY/播放



柳方 James Liu
北亞及大中華區總經理
通用電氣 - 能源集團 - 工業系統



李克賢 Christophe Fliou
亞洲董事總經理
日騰能源集團



PLAY/播放



PLAY/播放



PLAY/播放



PLAY/播放



簽約儀式
GE | 投資機構 | 日騰能源集團

亞洲業務拓展發佈會

(第 3/4 頁)



Press conference | Macau, Hong Kong 2014/08/19



2014年08月20日: 澳門日報 Macao Daily



2014年09月: 香港鏡報 Mirror Post

(第 4/4 頁)



Interview | Macau, Hong Kong

2014/12/18

BUSINESS



At light speed

A local energy management and lighting solutions company will roll out a second factory after six successful years of operation

BY ALEXANDRA LAGES

After just six years, Yatron Energy Group, a local company providing energy management services and lighting solutions, is about to open a new factory in mainland China. It will triple its current manufacturing unit capacity as the business expands from Greater China to Southeast Asia.

In an exclusive interview, Kenneth Chan Chio Hong, chairman and chief executive officer of the firm, tells Macau Business how he started a business with MOP10,000 (US\$1,250) and grew it into a US\$15 million-revenue conglomerate.

Yatron is a diversified organisation providing energy management and lightning solutions to utilities and energy-intensive industries, including commercial, healthcare, data centres and transportation. The company uses General Elec-

tric Company (GE) technology.

GE is an American multinational technology and financial services company, with products and services ranging from aircraft engines, power generation, water processing, and household appliances to medical imaging, business and consumer financing and industrial products. It serves customers in more than 100 countries.

Yatron is GE's sole authorised switchgear panel builder and distributor here, opening its factory in Zhuhai in 2010.

Targeting millions

It has branches in Macau, Hong Kong, Taiwan and, more recently in Malaysia, which is overseen by Mr. Chan's French partner, who is in charge of tapping the Southeast Asian market.

讓新的光芒出現

Let there be a new light

澳門商業雜誌 www.macaubusiness.com

Newsdesk | 18/12/2014 | in [BUSINESS](#)

A local energy management and lighting solutions company will roll out a second factory after six successful years of operation

After just six years, Yatron Energy Group, a local company providing energy management services and lighting solutions, is about to open a new factory in mainland China. It will triple its current manufacturing unit capacity as the business expands from Greater China to Southeast Asia.

In an exclusive interview, Kenneth Chan Chio Hong, chairman and chief executive officer of the firm, tells Macau Business how he started a business with MOP10,000 (US\$1,250) and grew it into a US\$15 million-revenue conglomerate.

Yatron is a diversified organisation providing energy management and lighting solutions to utilities and energy-intensive industries, including commercial, healthcare, data centres and transportation. The company uses General Electric Company (GE) technology and Yatron is GE's sole authorised switchgear panel builder and distributor here, opening its factory in Zhuhai in 2010.

(Page 1/2)

上圖：日騰能源集團CEO陳超雄

接受《澳門商業雜誌Macau Business》採訪

@COPYRIGHT YATRON



Interview | Macau, Hong Kong

2014/12/18

讓新的光芒出現

Let there be a new light

澳門商業雜誌 www.macaubusiness.com

Newsdesk | 18/12/2014 | in [BUSINESS](#)

A local energy management and lighting solutions company will roll out a second factory after six successful years of operation

"In November, we will move into a new plant and our capacity will triple. I had to increase our manufacturing unit's capacity in order to meet our clients' demands. With our business setting foot in Southeast Asia, the market is very big," Mr. Chan says, adding that "our aim for 2015 is for revenue to be around US\$25 million. This year, the target should be US\$15 million," the local businessman says.

The company's main clients are located in Macau, followed by Hong Kong and Taiwan. It also has clients in Southeast Asia now. "In Macau, our major client two years ago was the government. The government's requirements are very high and we are making high-end products and solutions. Then, fortunately, we started doing casino projects two years ago, like Sands China Ltd, Galaxy Entertainment Group and Melco Crown Entertainment Ltd," he says.

The full story can be read in this month's issue of Macau Business magazine, available at newsstands or online at www.magzter.com

(Page 2/2)



Mr Chan is expecting his company to rake in around US\$15 million in revenues this year; as of October, Yatron had made almost US\$13 million

"Yatron and GE are focused on energy management, which is one of the tools for sustainability. When the government or a client would like to bet on sustainability, we have to do energy management. I think the local market is a very big market for energy management," he says.

He adds that the company has been discussing with some existing casino projects how they can improve energy management systems; and also private and government schools, and other government departments. He says that most end-users are still in the "considering" stage.

"We're talking to some chairmen and top managers of companies and they would like to try energy management. We're still providing consultancy services," he says.

In what concerns environmental and energy conservation rules and laws, Macau also has a long way to go, he says. "In Macau, people are more relaxed. It will take three to five years for society to develop some mentality in this regard. In Taiwan and Southeast Asia, they accept our ideas.

"In November, we will move into a new plant and our capacity will triple. I had to increase our manufacturing unit's capacity in order to meet our clients' demands. With our business setting foot in Southeast Asia, the market is very big," Mr. Chan says.

He is expecting the company to rake in around US\$15 million in revenues this year; as of October, Yatron had made almost US\$13 million.

"We [aim for] our 2015 revenue to be around US\$25 million. This year, the target should be US\$15 million," the local businessman says.

The firm's major manufacturing products are switchgear and automatic components for energy management and lightning fixtures, and it has now started manufacturing air compressors for industrial use.

Yatron provides end-to-end products and service solutions that seek to ensure the reliability and protection of electrical infrastructure, from power plant, substations, to a facility's critical equipment, and all the power technology in-between. "The purpose of these systems is to increase the efficiency and reliability of operations and become more competitive," he says.

Casino world

The company's main clients are located in Macau, followed by Hong Kong and Taiwan. It also has clients in Southeast Asia now.

"In Macau, our major client two years ago was the government. The government's requirements are very high and we are making high-end products and solutions. Then, fortunately, we started doing casino projects two years ago, like Sands China Ltd, Galaxy Entertainment Group and Melco Crown Entertainment Ltd," he says.

Yatron is providing air conditioning and ventilation systems for Melco Crown's new signature project in Cotai, Studio City, and energy management systems and low voltage switchgear for Sands Cotai Central.

"Two years ago, most of the casino business was controlled by Hong Kong consultants and end-users. We didn't have any connection there. That's why we established the Hong Kong branch and got Hong Kong clients step by step," he says.

When asked about his recipe for success, Mr. Chan laughs out loud. "We're growing now. I cannot say we are successful yet. We're studying the market. I established Yatron with MOP10,000. When I rented the office we didn't have any money [he laughs]. Up to now, we're focused on quality service.

"We have no secrets; just honesty, quality and service".

Energy management includes planning and operation of energy-related production and consumption units. It embraces resource conservation, climate protection and cost savings, while users have permanent access to the energy they need.

Virgin lands

Mr. Chan believes that Macau is still at the beginning stage of environmental control and sustainability.

"For the last 10 years, economic growth has been very high and the government is arranging some departments in this area. The Environmental Protection Bureau was established only a few years ago.

上圖：日騰能源集團CEO陳超雄

接受《澳門商業雜誌Macau Business》採訪

@COPYRIGHT YATRON



Interview | Macau, Hong Kong

Chairman and CEO interview by Mirror Post, Hong Kong | Nov, 2014

特稿

尋找GE的第二故鄉

——訪日騰能源集團董事長陳超雄

「智慧成就夢想」。日騰能源集團董事長陳超雄這樣說，日騰集團憑藉美國通用電氣(General Electric-GE)智慧化系統等的技術力量、管理思維、企業文化，把本地化企業帶起來，成就中國人偉大的夢想。

◎文/天樂

中國在過去20年的時間裡，基礎設施方面投資力度巨大，當中為能源管理的發展提供了必備的條件。今天，由年輕工程師陳超雄成立的日騰能源集團將如何把握亞洲這個能源市場的管理及發展機遇，使集團成為港澳能源管理企業的標桿？



▲日騰能源集團董事長陳超雄稱，日騰作為能源管理者，GE在中國的合作夥伴，將抓緊中國能源管理行業的機遇。

與GE一起把企業達致本地化

談起能源管理這一課題，日騰能源集團董事長陳超雄這樣說，自愛迪生發明電燈泡以及GE面世以來，人類開始使用電力，帶來科技的進步和便利，但同時也造成巨大的能源消耗，一直以來人們亦忽略能源管理這一概念。陳超雄稱，直至近5年來，能源管理才逐漸成為世界各地的重要議題，能源管理涉及天然氣、石油、頁岩氣、電力、煤炭等類別。能源管理是一種管理手法，但其操作模式不只是以人力去管理，而是以自動化系統、電氣組件、軟件以及人的經驗去作綜合管理。

成立於2006年的澳門日騰能源集團至今已發展成為一個多樣性組織企業，包括能源管理、能源全方位解決方案等，從事能源、數據中心、水處理、交通乃至醫療系統的業務。在業務進入快車道上，陳超雄如何帶領集團在促進能源發展的前提下擔當着一個重要的角色？陳超雄這樣回答，集團一直與美國通用電氣(GE)合作，GE目前主要為全球提供最新技術，例如電氣軟件、監察系統等進行生產整合。它雖然是全球最先進的設備和系統生產商，但它仍需要在本本地化市場擁有一個作系統整合及具生產能力的企業，與他們一起把企業達致本

地化，打造堅實的合作夥伴關係以實現共同發展和達致雙贏，日騰能源集團便是GE在大中華區其中一個主要的授權合作夥伴。也正因為這概念，GE可以130多年來屹立不倒，因為它深知再大的企業，當處在不同市場時，都需要適應當地的文化和溝通方式。

成就中國人偉大的夢想

「智慧成就夢想」是日騰的宗旨。陳超雄指出，集團為GE的授權生產商，由建廠、規劃到生產都得到GE很大的支持。日騰集團憑藉GE智慧化系統等的技術力量、管理思維、企業文化，把本地化企業帶起來，成就中國人偉大的夢想。

能源管理是一個資金密集型、人才技術密集型的行業，日騰在亞洲區域的戰略部署又是如何？陳超雄表示，集團除了一直在香港、澳門等地發展外，其亞洲重心將是大中華區，當然東南亞這全球市場的焦點亦不容

忽視，集團最近已在馬來西亞成立東南亞地區總部。集團將與GE和GE最新收購的法國阿爾斯通，共同發展亞洲市場。

為客戶提供全方位能源管理服務

國家發展能源邁起初步階段，這需要吸引世界專才和國際級企業來扶助當地企業及政府部門來發展能源企業事業。GE公司大中華區總裁兼首席執行官夏智誠(Mark Hutchinson)曾稱中國將成為GE第二故鄉，故每年會作大力度的投資項目，例如：在中國培訓管理人才、企業整合，以達致本地化；與此同時，GE履行企業社會責任，將中國的人才交流、技術增長帶動起來。

日騰作為能源管理者，GE在中國的合作夥伴，將抓緊中國能源管理行業的機遇。陳超雄稱，現在建造智能化大廈和工廠，一般企業成本會增加

3%，但3至5年內可回本。日騰為客戶提供全方位能源管理支援技術服務，集團會先與客戶作簡單的溝通，了解他們有什麼問題，怎可達致可持續發展。之後會給予顧客簡單的建議書，為對方提供能源顧問服務，評估在能源方面有什麼可改進空間。他續說，這個社會若不抓能源管理，會衍生很多問題，例如：空氣污染、員工質素下降、效能降低，這或令企業帶來更大的損失。所以，一系列能源管理措施不僅可改善企業自身，也可提升員工質素乃至實現社會的可持續發展。

把握粵港澳三地的合作契機

隨着港珠澳大橋的即將興建落成和橫琴新區開發項目的進一步落實，將深化粵港澳三地的合作。日騰又如何使澳門在能源管理的發展上得到提升，把握粵港澳三地的契機？陳超雄表示，澳門雖是個小城市，但集團立志朝着成為澳門輸配電及空調產品領導者角色邁進。他創立的日騰已有8年的時間，在澳門擔當着輸配電的重要角色。他認為，空調控制系統還有待改進空間。現時澳門的大型企業、工廠、酒店都設有樓宇自動化系統，然而，仍只是流於表面，沒有將

能源管理落到實處。他希望集團未來可把那些現有已實行樓宇自動化的企業、大樓再作改善，未有的則會幫他們建立樓宇自動化和能源管理系統。

陳超雄特別指出，日騰將借助橫琴、深圳前海、

泛珠三角9+2區域等周邊地區進行發展。現在集團先在橫琴、海南等地進行洽談發展項目，扶助當地企業發展能源管理，踏出第一步。他表示，要與世界接軌並不容易，他感謝GE給予他們平台和學習機會，特別是以其專業技術、財務等方面為集團作出援助，讓他們逐漸地成長壯大。

近年中國經濟正在急速增長，它有望成為全球最大經濟體。日騰將繼續紮根自己家鄉港澳，並密切配合GE在中國及亞太區的發展，將能源管理做深做大。我們有理由相信在像日騰這樣默默耕耘企業的努力下，他朝中國可成為GE的第二故鄉。



▲日騰能源集團工廠



▲日騰能源集團至今已發展成為一個多樣性組織企業，包括能源管理、能源全方位解決方案等，從事能源、數據中心、水處理、交通乃至醫療系統的業務。



Interview | Macau, Hong Kong

Chairman and CEO - Kenneth Chan Interviewed by Macau Asia Satellite Television

On 2014/10/28, Chairman and CEO Kenneth Chan was interviewed by MASTV and attended "Moved Macau" TV programs. YATRON Energy Group CEO Mr. Kenneth Chan was such a practical person, with their diligence and wisdom to achieve his dreams. After he finished his University in Taiwan, he return Macau for hometown's construction as a special zone identity of the owner with other community. Contributing for the motherland's prosperity and stability and set a good example for the majority of adolescents in Macau.





Directory of Enterprises Thailand, Myanmar

GE | YATRON Local Present



2015 - 2016
(September Edition)
泰緬 企業名錄
新聞網: www.mdbkk.com 訂價500泰銖(5000緬幣)
DIRECTORY OF ENTERPRISES IN THAILAND & MYANMAR

yama ခေါ်ယော
ရောင်းချတာ 9 လောက်ရှိတယ်

大漢食品工業股份有限公司
Ta Han Food Industrial Co., Ltd.
No.66/7, Block No.142/1, Kyau Sit Thai Yek Mon Industrial Zone, South Dagon Myo Thit Township, Yangon, Myanmar
Tel : 09-7218-5919, 09-5113-0911 Website : http://www.tahanyama.com

GE **YATRON**
Authorized P.B. | Distributor | S.I. Intelligence Makes The Dream Come True | WWW.YATRONGROUP.COM

GE Energy
GE Industrial Solutions
GE Lighting

Energy Industrial Solutions

MV, MV, LV Switchgear and Controlgear, Component, RMU, Battery, UPS, ATU, PLC, SCADA, Power Analyzer, Transformer



Renewable and Green Energy

Solar and Wind System | EV Charger Station



Lighting Solutions



sales@yatrongroup.com

www.yatrongroup.com

Malaysia | Hong Kong | Taiwan | China | Malaysia | Singapore | Indonesia | Myanmar

YATRON 日騰 ENERGY GROUP

能源管理系統

Energy Management System



CERTIFICATIONS

Complies with	Certificates
ISO 9001	TUV (Germany)
IEC 61308	TEU (Germany)
IEC 60439, IEC 61439	REMA, ASEP, CEEC, ASTA, TUV
GB 7251	CCC (China)
IEC 60181	TICV
BS 6387	THCV
UL94	SGS

LOCAL SERVICES

- Local Support
- Local Solutions
- Local Maintenance
- Local Pre-sales Services
- Local After sales Services

HEADQUARTER	YATRON Energy Group Co., Ltd.	+853 28354093
Malaysia	YATRON Engineering Co., Ltd.	+853 28354093
Hong Kong	YATRON E&M Equipment (Hong Kong) Co., Limited	+852 11674518
Taiwan	YATRON E&M Equipment Co., Ltd. Taiwan Branch	+886 2 87292562
China (Zhuohu) Factory	YATRON E&M Equipment (Zhuohu) Co., Ltd.	+86 754 8875623
Malaysia ASEAN Headquarter	YATRON Energy (Malaysia) Sdn. Bhd.	+60 3 21375255
Myanmar	Representative office	+65 9 401550100

sales@yatrongroup.com

www.yatrongroup.com



Malaysia | Hong Kong | Taiwan | China | Malaysia | Singapore | Indonesia | Myanmar



THANK YOU!

SERVICE CENTER (GREATER CHINA) MACAU, HK, TAIWAN AND MAINLAND CHINA

Macau

Guangzhou, Zhuhai
Guangdong, China

Hong Kong

Taipei

sales@yatrongroup.com

www.yatrongroup.com



THANK YOU!

SERVICE CENTER (ASEAN)
MALAYSIA, THAILAND

Malaysia

T: +60 (3) 21175255

Thailand

T: +66 20 260 117

sales@yatrongroup.com

www.yatrongroup.com



The equation

GE people = Unceasing curiosity + relentless drive
+ $\frac{\text{imagination}}{\text{risk}} \times \text{sweat}^2 \longrightarrow$ Break through ideas

that make  go: "WOW 

"WHAT WE IMAGINE... WE CAN MAKE HAPPEN."

Q & A?